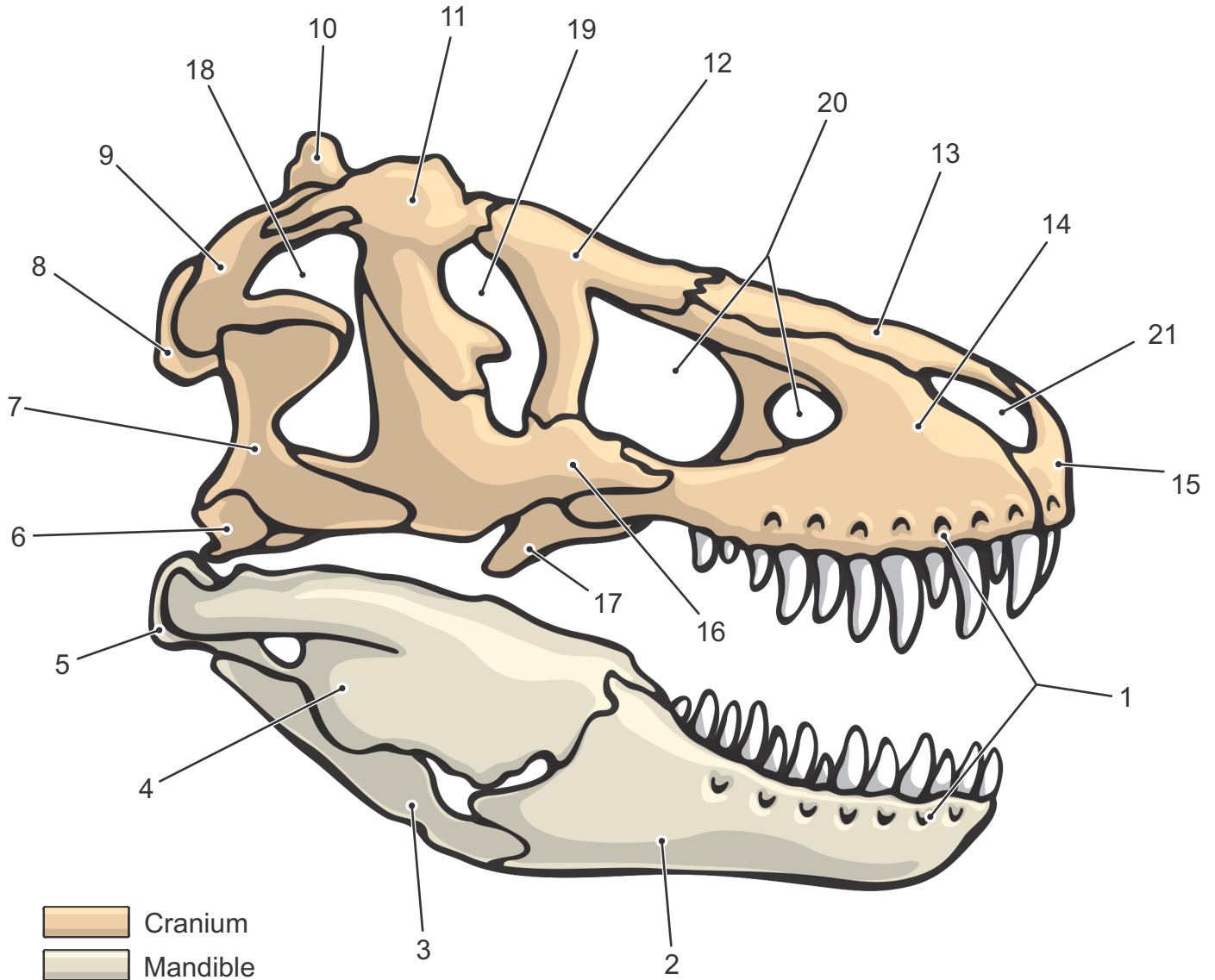


## Bones and Features of the Skull of *Tyrannosaurus rex*



- 1·Foramina
- 2·Dentary
- 3·Angular
- 4·Surangular
- 5·Articular
- 6·Quadrate
- 7·Quadratojugal

- 8·Lacrymal
- 9·Nasal
- 10·Maxilla
- 11·Exoccipital
- 12·Squamosal
- 13·Parietal
- 14·Postorbital

- 15·Premaxilla
- 16·Jugal
- 17·Ectopterygoid
- 18·Lateral Temporal Fenestra
- 19·Orbit
- 20·Antorbital Fenestrae
- 21·Naris