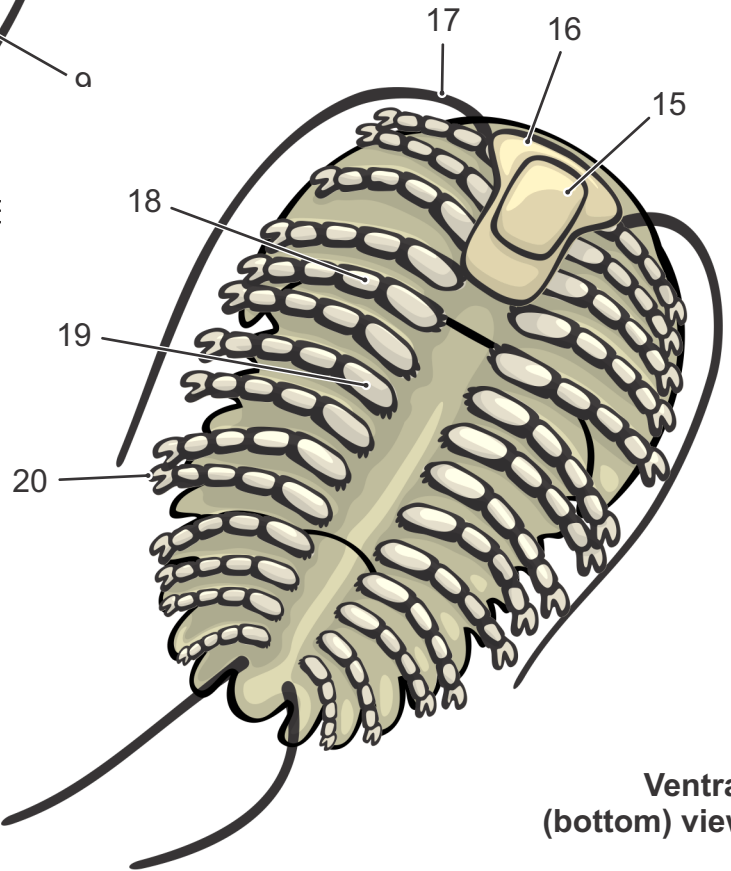
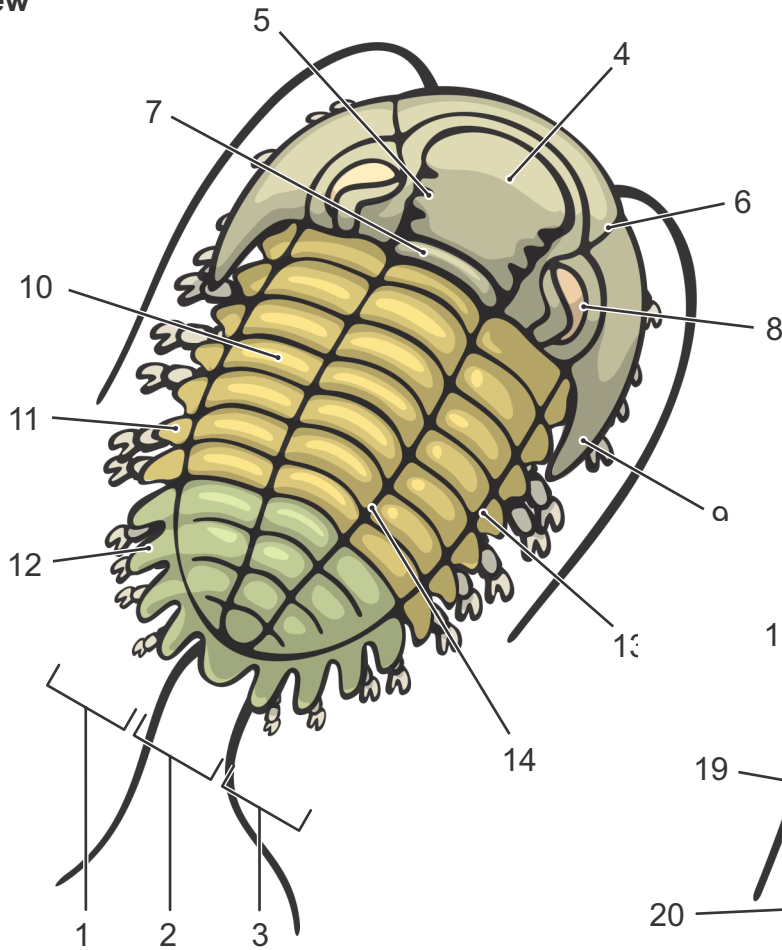


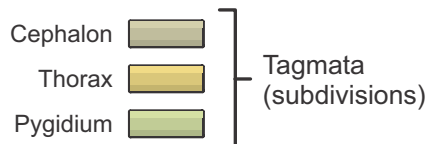
Features of the Trilobite³ (Class †Trilobita²)

Dorsal (top)
view



Ventral
(bottom) view

- 1·Left Pleural Lobe¹
- 2·Axial Lobe¹
- 3·Right Pleural Lobe¹
- 4·Glabella
- 5·Glabellar Furrow
- 6·Facial Suture
- 7·Occipital Lobe (Ring)
- 8·Compound Eye
- 9·Genal Spine
- 10·Pleura
- 11·Pleural Spine
- 12·Pygidial Spine
- 13·Pleural Furrow
- 14·Axial Furrow
- 15·Hypostome (Mouthplate)
- 16·Rostral Plate
- 17·Antenna
- 18·Leg
- 19·Coxa
- 20·Claw



Notes:

- 1· These are the lobes for which the trilobite is named
- 2· Extinct taxon. The first and last known trilobites lived between 5.2 MYA and 2.5 MYA
- 3· Some of the features listed are not present in all trilobite subgroups.