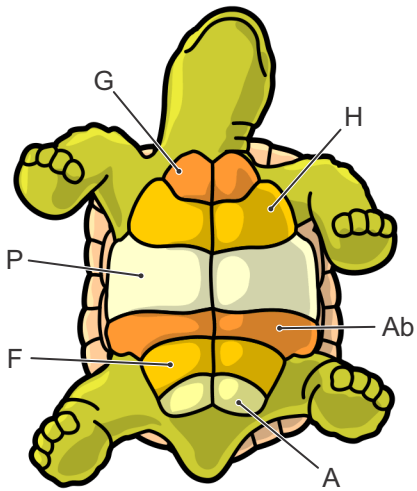
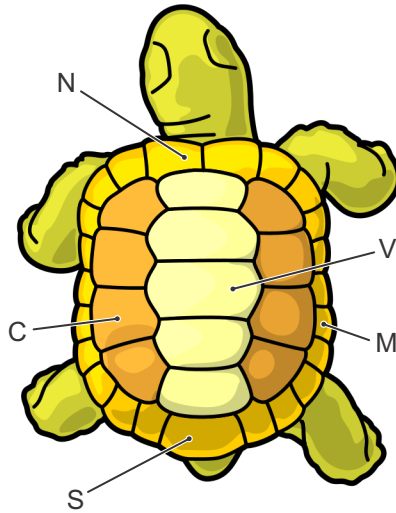


Tortoise Shell Scutes

Dorsal View

Scutes (Carapace)

- N: Nuchal
- V: Vertebral
- C: Costal
- M: Marginal
- S: Supra-Caudal



Ventral View

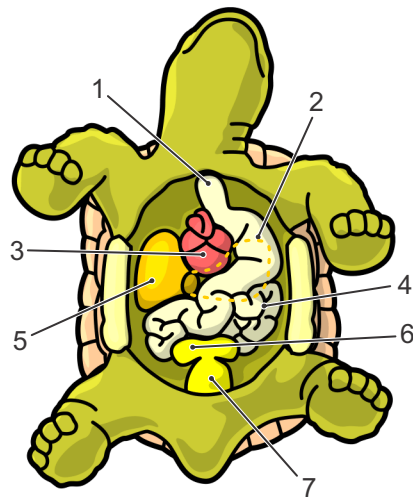
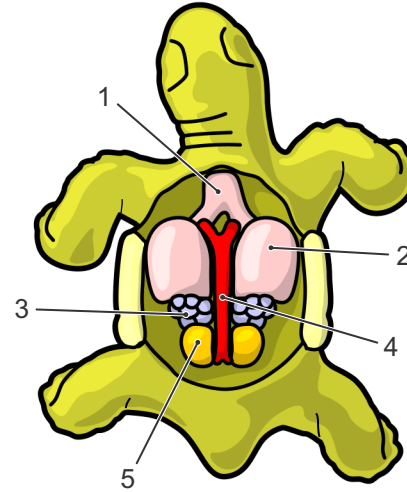
Scutes (Plastron)

- G: Gular
- H: Humeral
- P: Pectoral
- Ab: Abdominal
- F: Femoral
- A: Anal

Internal Anatomy of the Tortoise

Dorsal View
(carapace removed)

- 1: Trachea
- 2: Lungs
- 3: Ovaries
- 4: Aorta
- 5: Kidneys



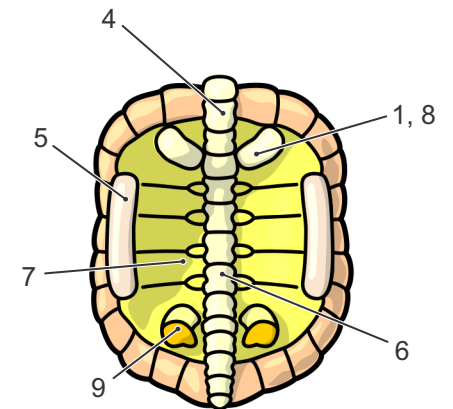
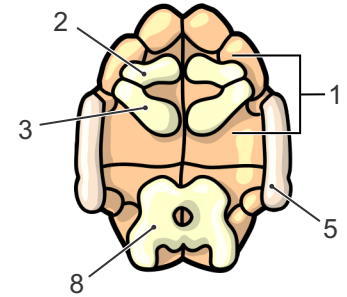
Ventral View
(plastron removed)

- 1: Esophagus
- 2: Stomach
- 3: Heart
- 4: Intestine
- 5: Liver (right lobe, left not shown)
- 6: Bladder
- 7: Cloaca

Tortoise Skeleton

Dorsal View
of Plastron

- 1: Shoulder (pectoral) Girdle
- 2: Prescapular Process
- 3: Procoracoid
- 4: Backbone
- 5: Bridge
- 6: Fused vertebrae
- 7: Ribs
- 8: Scapula
- 9: Pelvic Girdle



Ventral View of Carapace