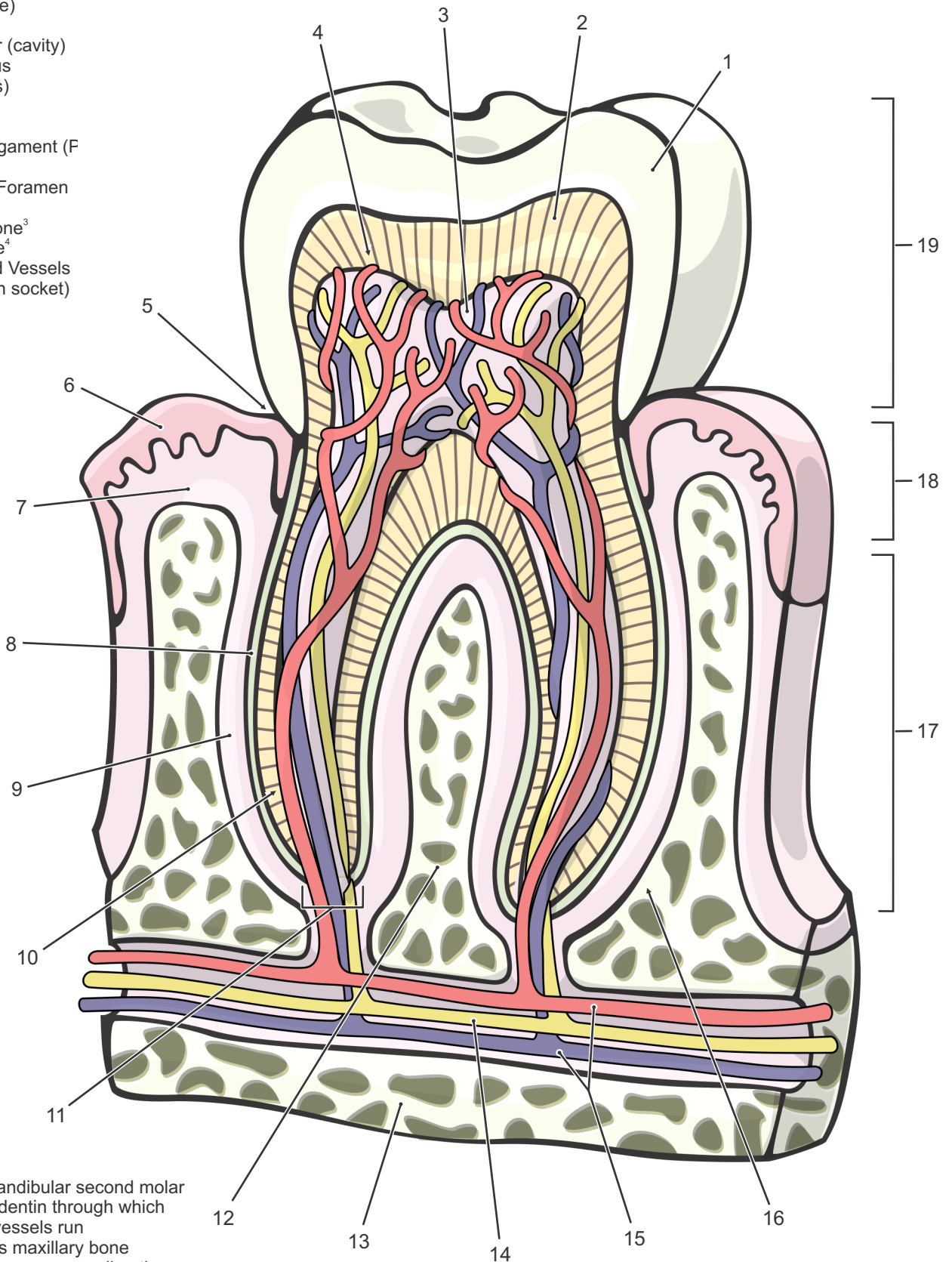


Structure of the Human Tooth¹

- 1· Enamel
- 2· Dentin (dentine)
- 3· Dental Pulp
- 4· Pulp Chamber (cavity)
- 5· Gingival Sulcus
- 6· Gingiva (gums)
- 7· Mucosa
- 8· Cementum
- 9· Periodontal Ligament (F)
- 10· Root Canal²
- 11· Root (Apical) Foramen
- 12· Alveolar Bone
- 13· Mandibular Bone³
- 14· Alveolar Nerve⁴
- 15· Alveolar Blood Vessels
- 16· Alveolus (tooth socket)
- 17· Root
- 18· Neck
- 19· Crown



Notes:

- ¹ Tooth shown is a mandibular second molar
- ² Channel within the dentin through which nerves and blood vessels run
- ³ For upper jaw, this is maxillary bone
- ⁴ This term refers to bone surrounding the Alveolus (16)