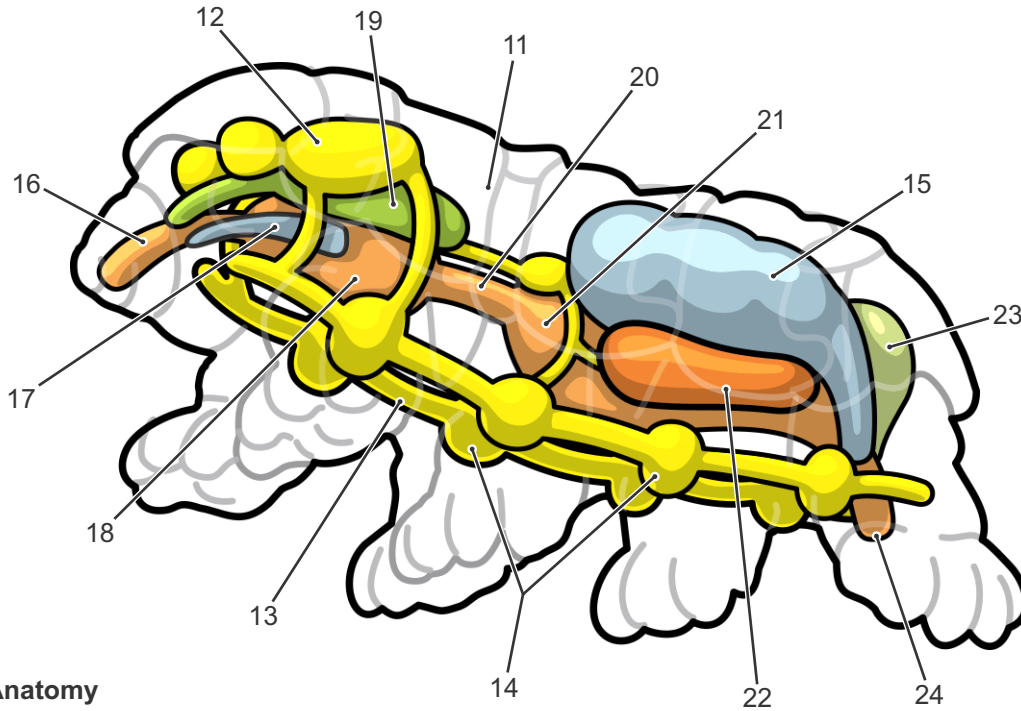


# Tardigrade (Waterbear) Anatomy



## External Anatomy

- 1·Legs (8)
- 2·Claws
- 3·Secondary spine of Claw
- 4·Eye Spot
- 5·Mouth

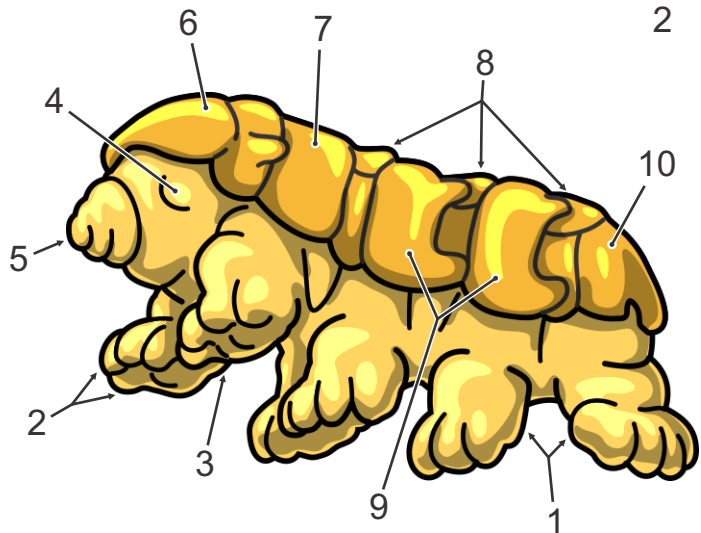
### Tergal Plates\*

- 6·Cephalic Plate
- 7·Scapular Plate
- 8·Median Plates
- 9·Paired Plates
- 10·Terminal Plate



## Internal Anatomy

- 11·haemocoel (body cavity)
- 12·Brain
- 13·Paired Ventral Nerve Cord
- 14·Ventral (Segmental) Ganglia
- 15·Ovary
- 16·Tubular Pharynx
- 17·Stylet
- 18·Sucking Pharynx
- 19·Salivary Gland
- 20·Esophagus
- 21·Midgut
- 22·Malpighian Glands (one each side)
- 23·Excretory Gland
- 24·Anus



\* Plate configuration shown is found in Family Echiniscidae. Plates may be differently configured, and are absent in many Families of Tardigrade)