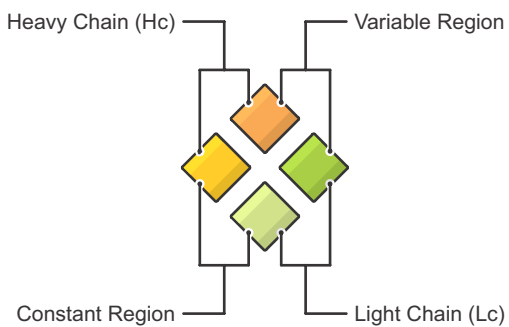
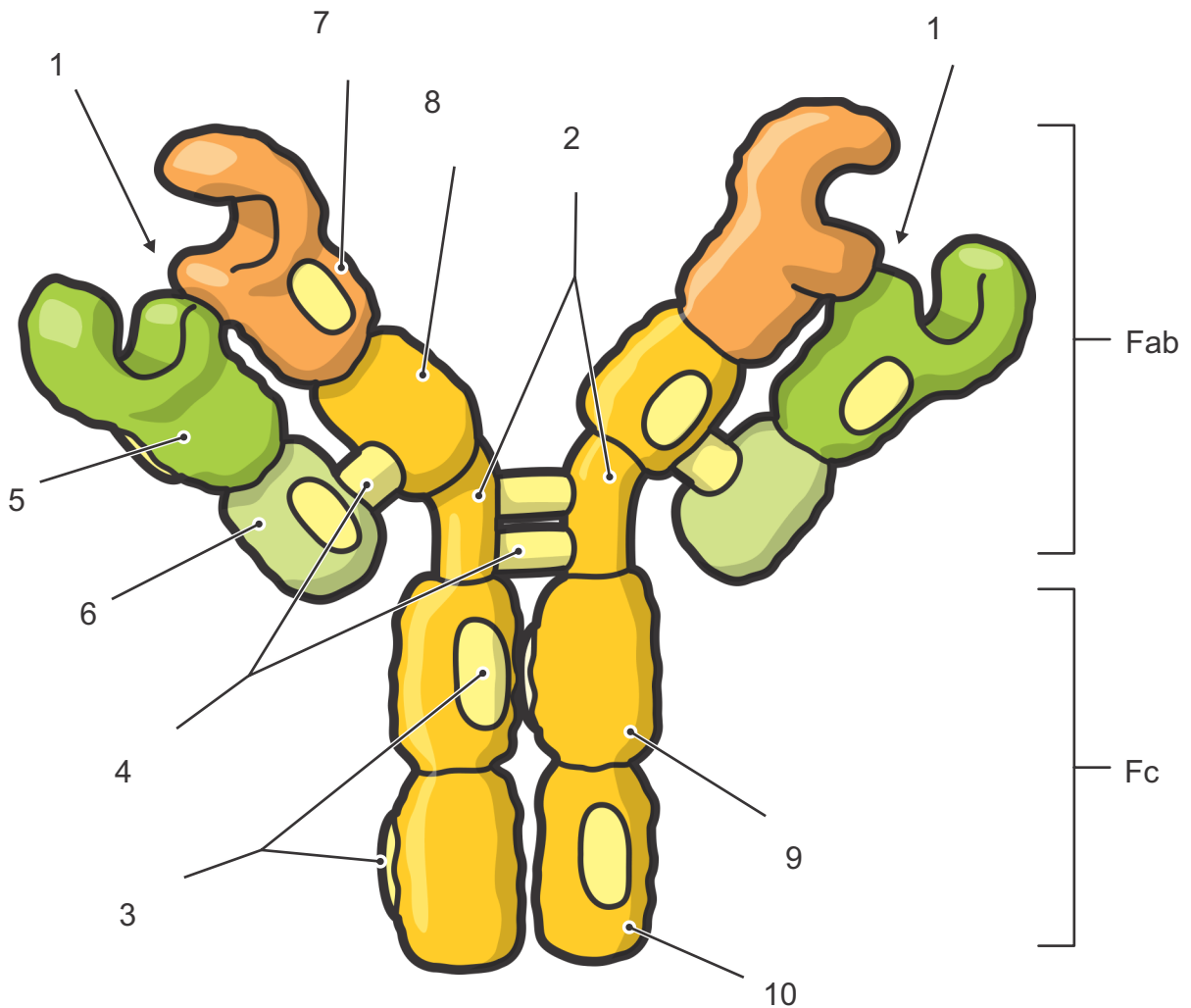


Monomer Antibody (Immunoglobulin)



- Fab-Fragment (Antigen Binding)
- Fc-Fragment (Crystallizable) or Tail Region (biological activity mediation)
- 1-Antigen Binding Sites (identical)
- 2-Hinge Region (flexible to allow variable distance between antigen binding sites)
- 3-IntraChain Disulfide bonds
- 4-InterChain Disulfide bonds
- 5-VL (Variable Light) Region
- 6-CL (Constant Light) Region
- 7-VH (Variable Heavy) Region
- 8-CH1 (Constant Heavy 1) Region
- 9-CH2 (Constant Heavy 2) Region
- 10-Ch3 (Constant Heavy 3) Region