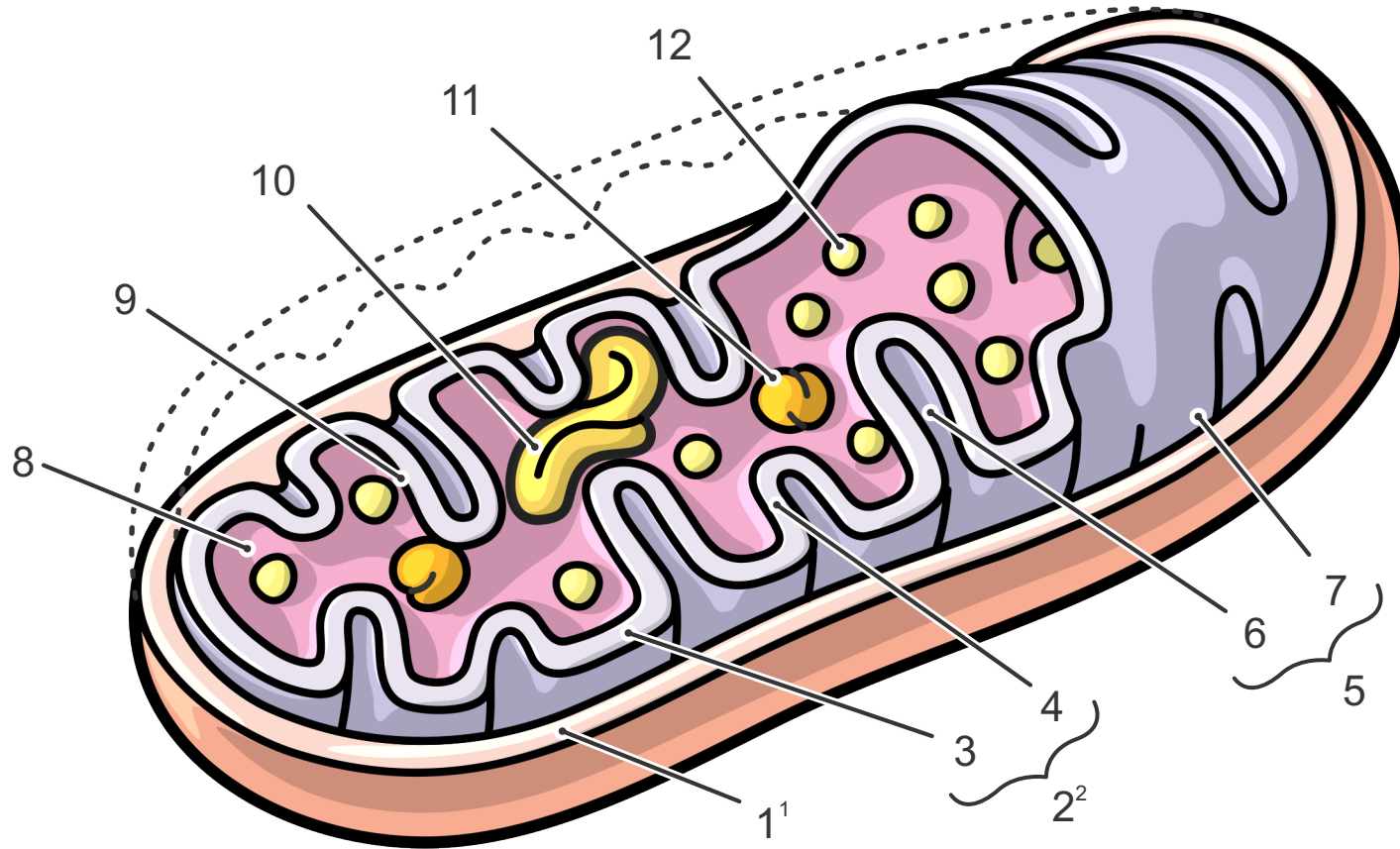


Structure of the Mitochondrion



1·Outer Membrane¹
 2·Inner Membrane²
 3·inner boundary membrane
 4·Cristal membrane
 5·Intermembrane Space
 6·intercrystal space

7·peripheral space
 8·Matrix
 9·Cristae³ (inner membrane folds)
 10·Mitochondrial DNA
 (looped as with bacteria)
 11·Matrix Granule
 12·Ribosomes

1) Covered in Porins (Porin Channels), which allow passive transport of small molecules

2) Largely composed of proteins which are involved in metabolism, metabolite transport, and ATP synthesis

3) Current models see cristae as being connected with the peripheral space (7) by tubular junctions (this is known as the "crista-junction" model)