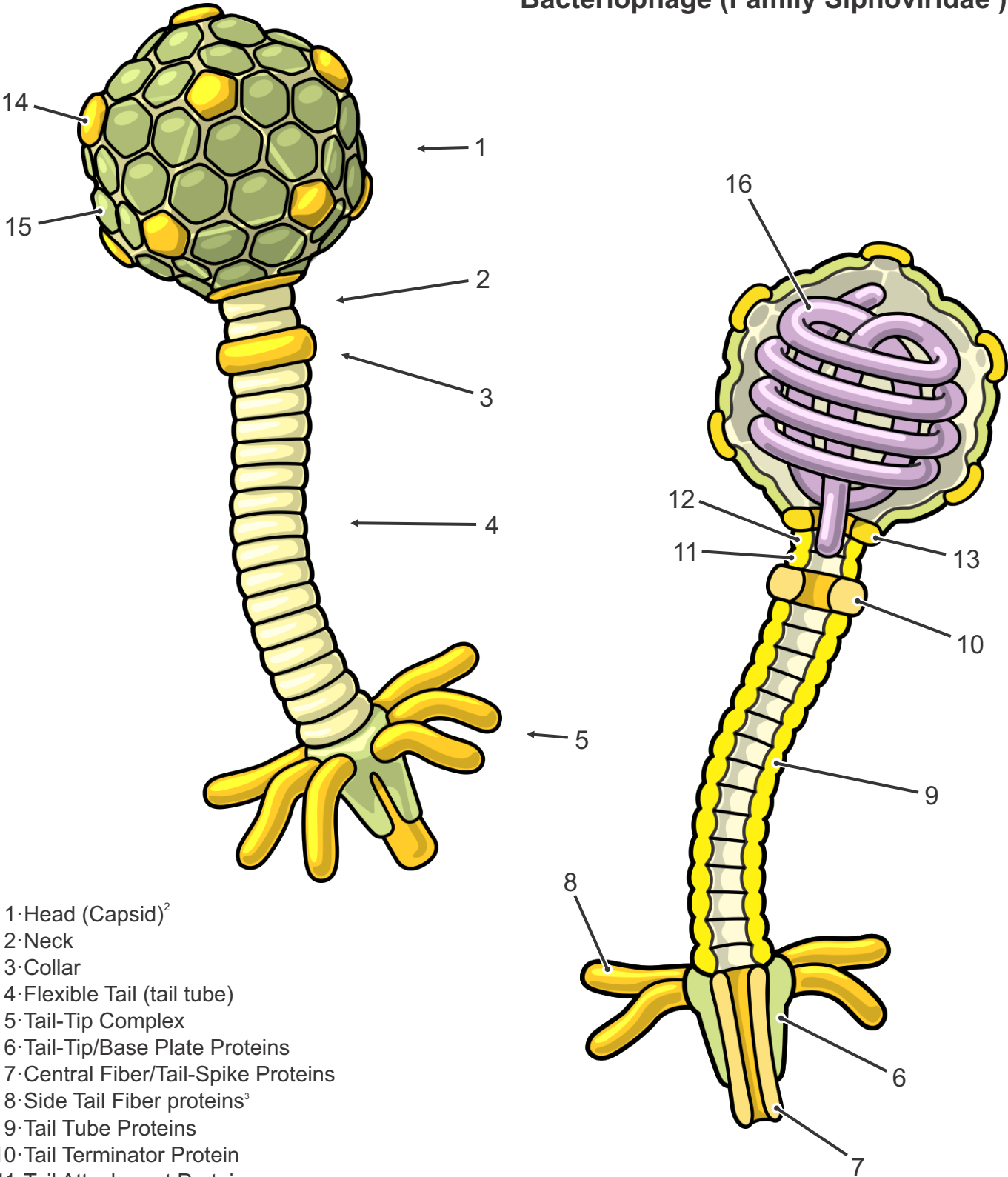


Bacteriophage (Family Siphoviridae¹)



- 1·Head (Capsid)²
- 2·Neck
- 3·Collar
- 4·Flexible Tail (tail tube)
- 5·Tail-Tip Complex
- 6·Tail-Tip/Base Plate Proteins
- 7·Central Fiber/Tail-Spike Proteins
- 8·Side Tail Fiber proteins³
- 9·Tail Tube Proteins
- 10·Tail Terminator Protein
- 11·Tail Attachment Protein
- 12·Head/Tail Joining Protein
- 13·Portal Protein
- 14·Penton / Vertex Protein (11x)
- 15·Hexon / Major Capsid Protein (60x)
- 16·dsDNA (Double Stranded DNA)

- 1) Siphoviridae is a large and important group. Features portrayed here are typical, but not universal in this family.
- 2) t-7 icosahedral symmetry.
- 3) Typically 6 fibers (sometimes 3-4)