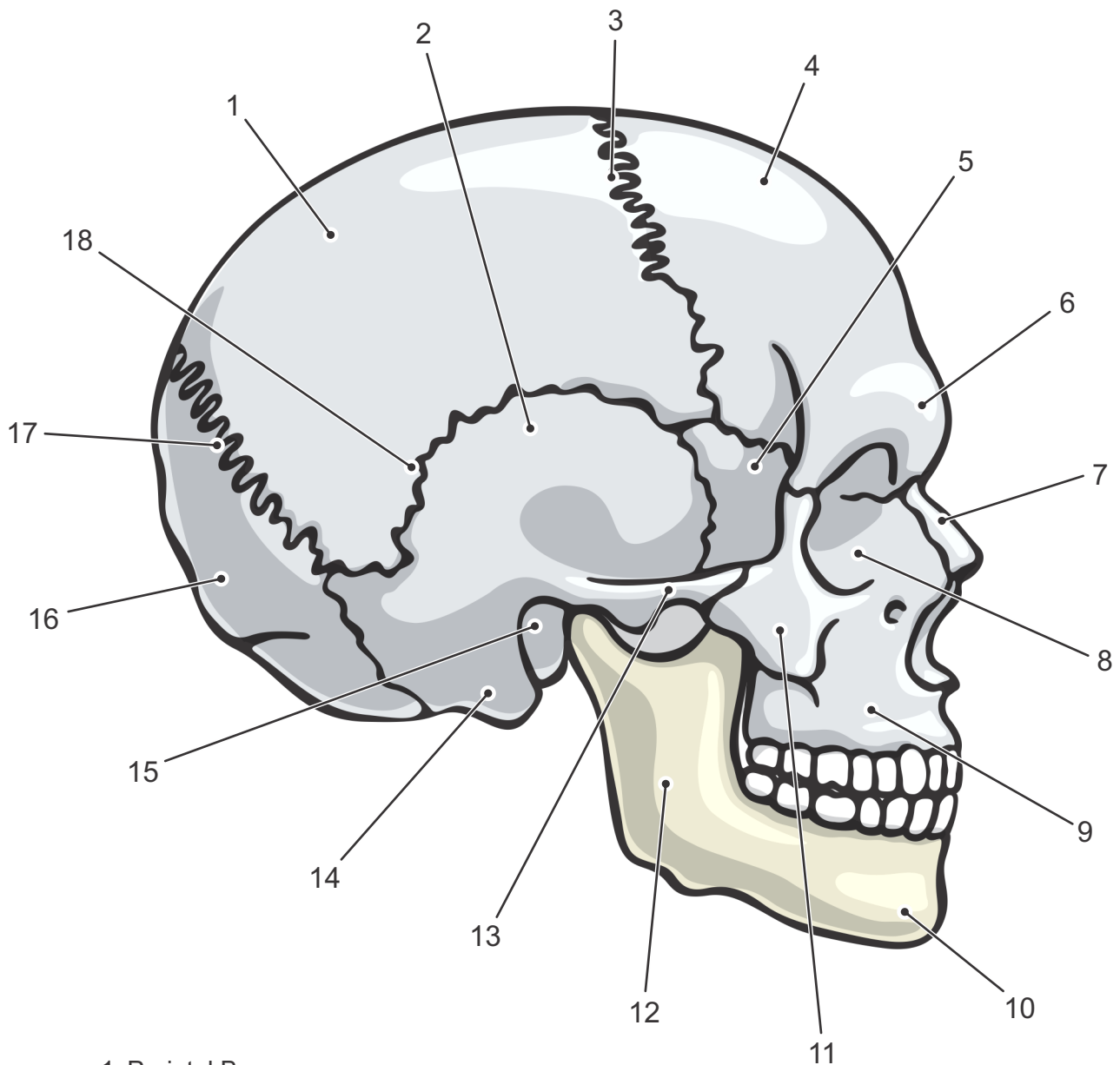


Features of the Human Skull



- | | |
|--------------------------|------------------------------|
| 1· Parietal Bone | 11· Zygomatic Bone |
| 2· Temporal Bone | 12· Ramus |
| 3· Coronal Suture | 13· Zygomatic Process |
| 4· Frontal Bone | 14· Mastoid Process |
| 5· Sphenoid Bone | 15· External Acoustic Meatus |
| 6· Supraorbital Process | 16· Occipital Bone |
| 7· Nasal Bone | 17· Lambdoid Suture |
| 8· Lacrimal Bone | 18· Squamosal Suture |
| 9· Maxilla | |
| 10· Mental Protruberance | |

