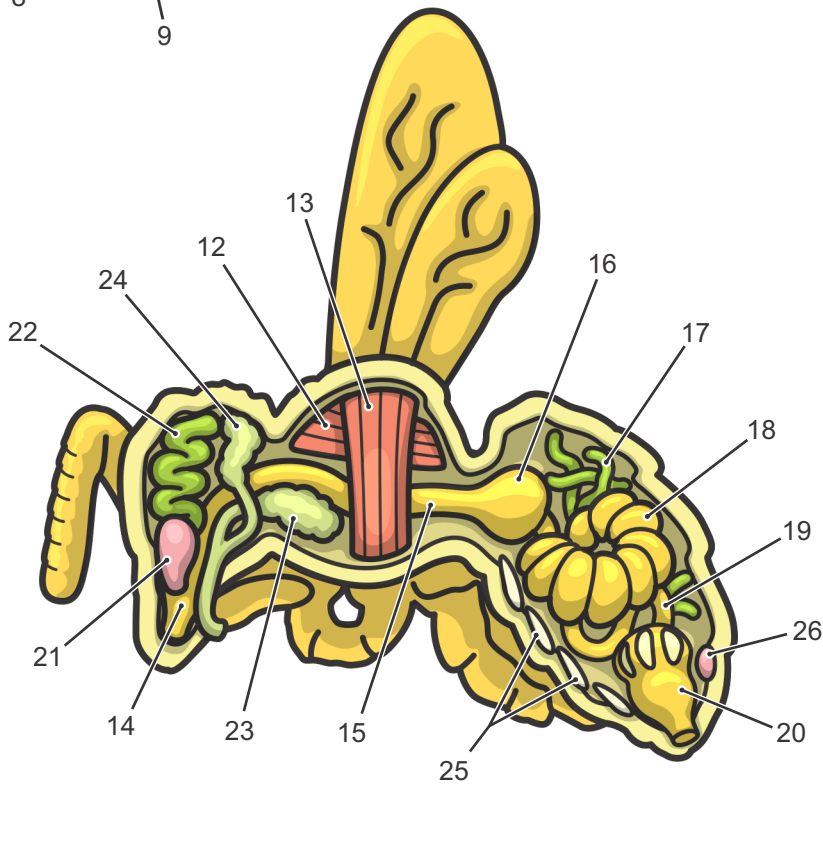
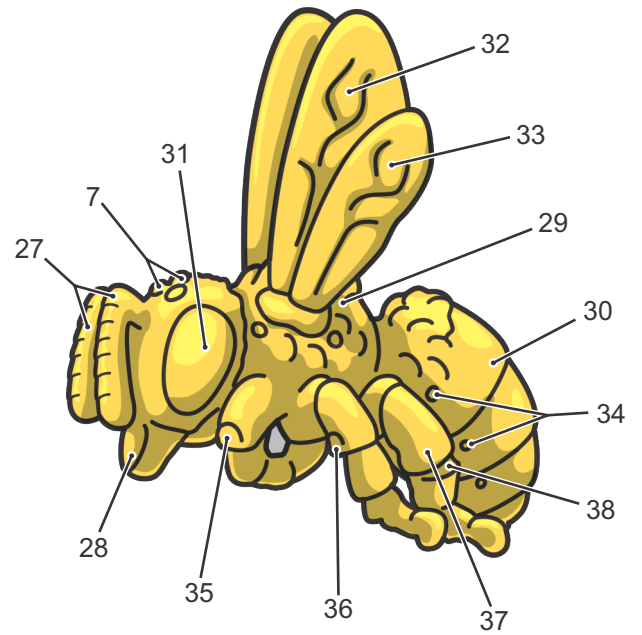
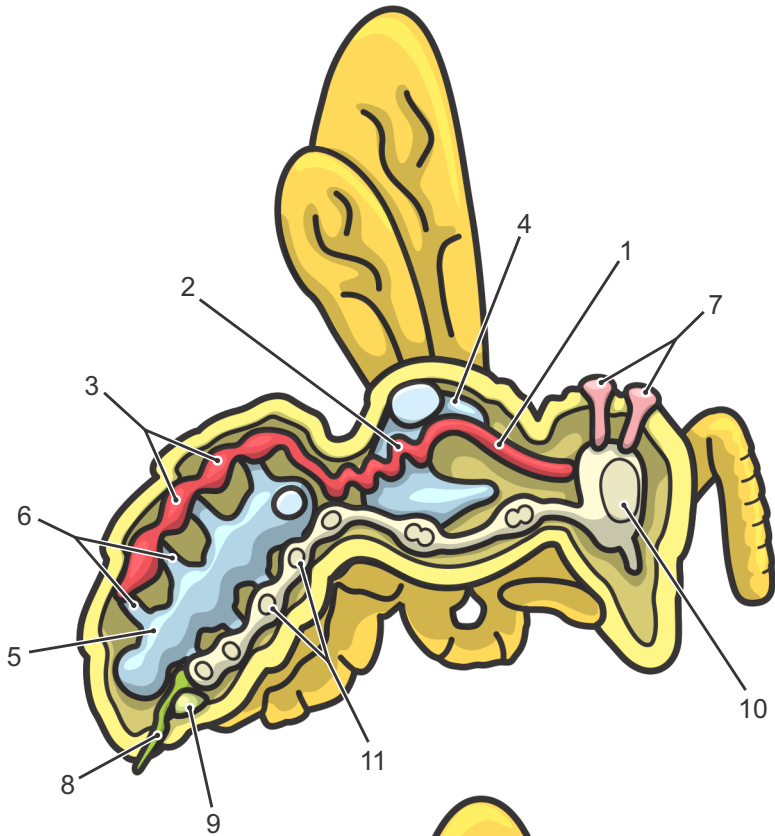


Honey Bee Worker - Internal and External Anatomy



- 19·Intestine
- 20·Rectum
- 21·Mandibular Gland
- 22·Hypopharyngeal Glands
- 23·Thoracic Salivary Gland
- 24·Head Salivary Gland
- 25·Wax Glands
- 26·Nasonov Gland
- 27·Antennae
- 28·Jaws
- 29·Thorax
- 30·Abdomen
- 31·Compound Eye
- 32·Forewing
- 33·Hind wing
- 34·Spiracles
- 35·Antenna Cleaner (foreleg)
- 36·Spur (midleg)
- 37·Pollen Basket (hindleg)
- 38·Pollen press (hindleg)
- 1·Aorta
- 2·Convoluted part of aorta
- 3·Heart (4 ostia)
- 4·Thoracic Tracheal Sacs
- 5·Abdominal Tracheal Sac
- 6·Tracheae
- 7·Ocelli
- 8·Sting
- 9·Venom Gland
- 10·Brain
- 11·Ganglia (7)
- 12·Lateral Muscle
- 13·Dorsoventral Muscle
- 14·Pharynx
- 15·Oesophagus
- 16·Crop
- 17·Malpighian Tubules
- 18·Ventriculus (midgut)