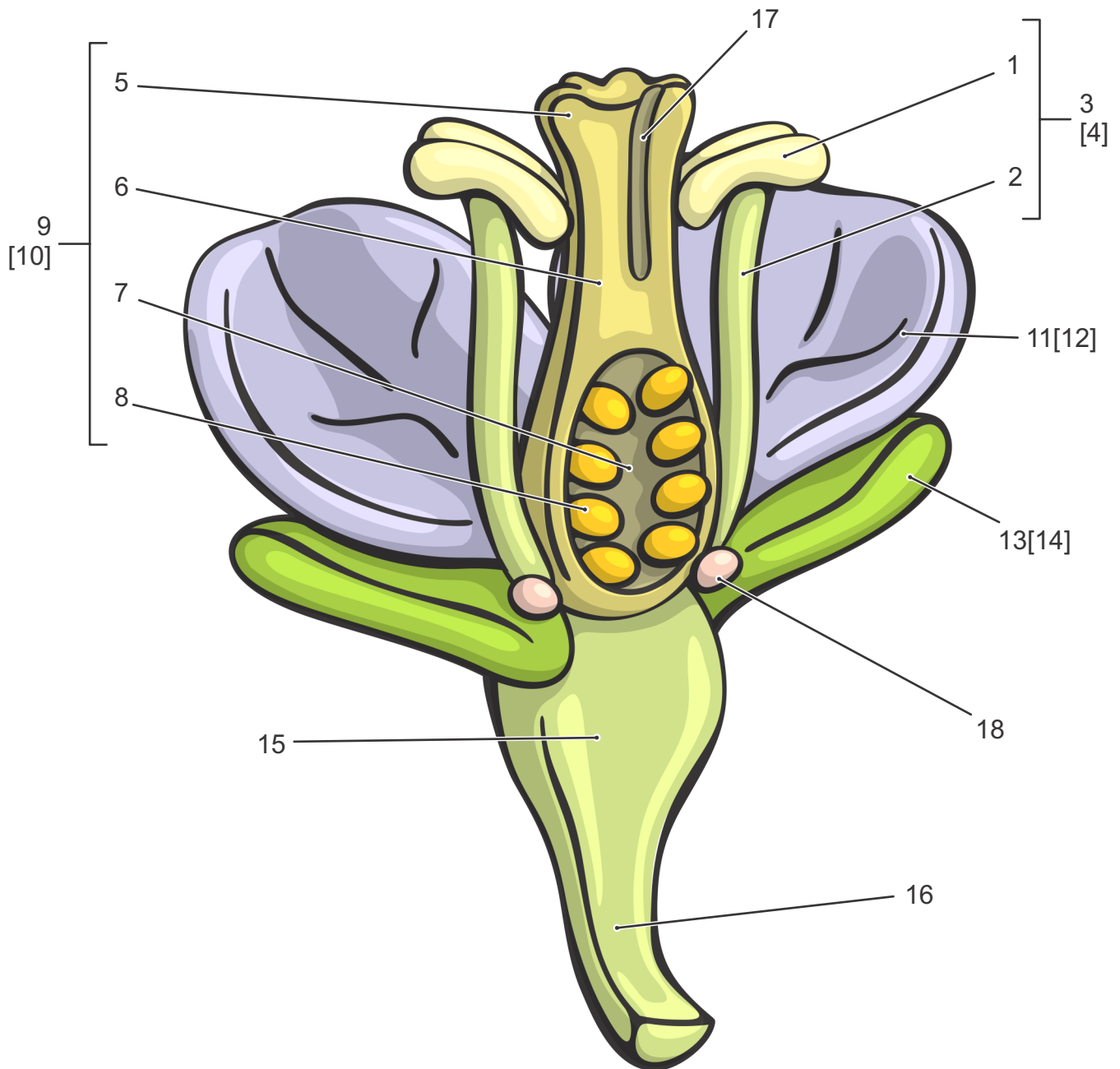


Anatomy of a Typical Flower



- 1·Anther
- 2·Filament
- 3·Stamen
- 4·Androecium(all Stamens)
- 5·Stigma
- 6·Style
- 7·Ovary
- 8·Ovule
- 9·Carpel
- 10·Gynoecium (all Carpels; in this case 1)

- 11·Petal
- 12·Corolla (all Petals)
- 13·Sepal
- 14·Calyx (all Sepals)
- 15·Receptacle
- 16·Pedicel (stem)
- 17·Pollen Tube
- 18·Nectary