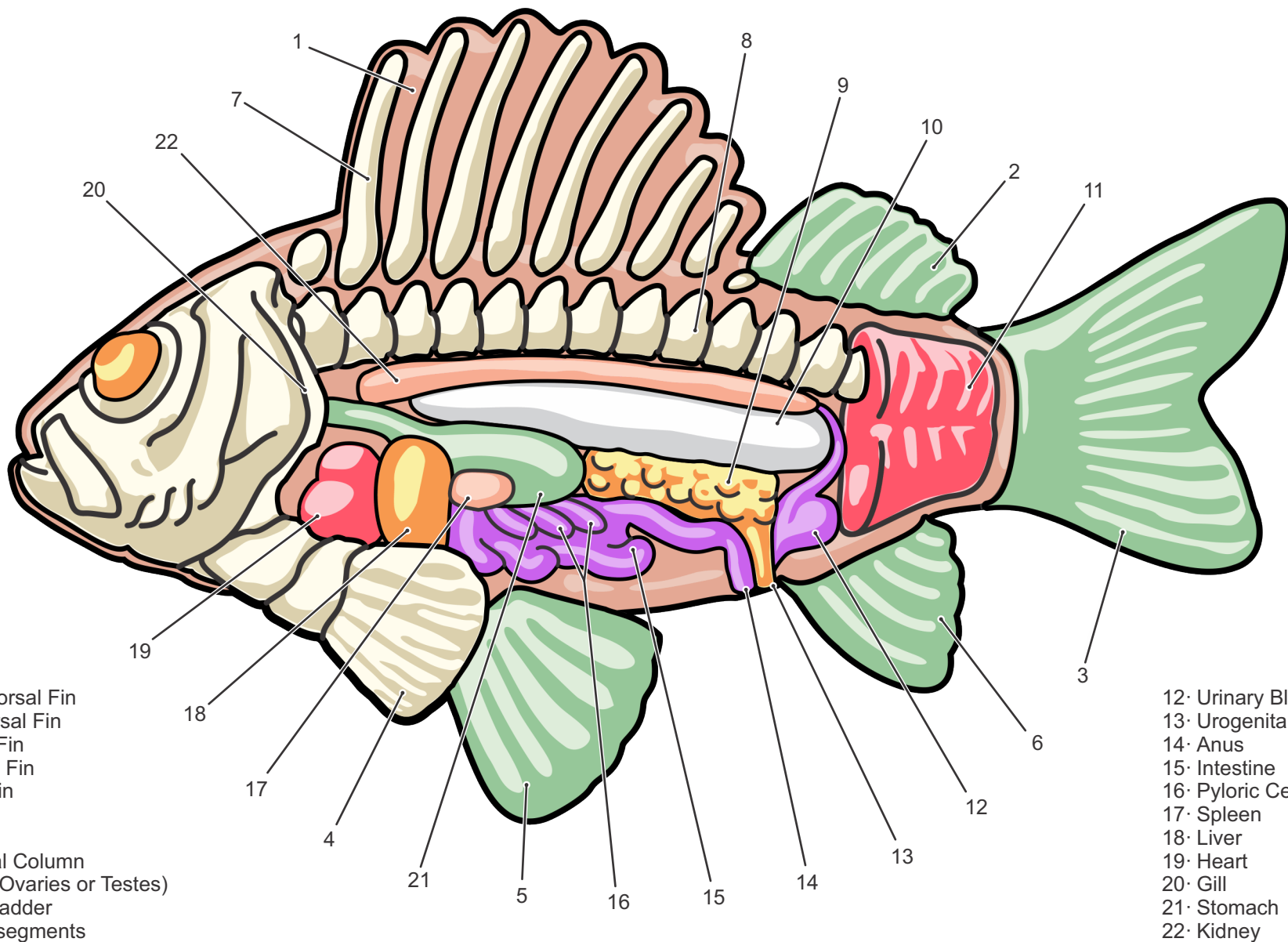


# Anatomy of the Ray-Finned Fish (Class Actinopterigii)



- 1· Spiny Dorsal Fin
- 2· Soft Dorsal Fin
- 3· Caudal Fin
- 4· Pectoral Fin
- 5· Pelvic Fin
- 6· Anal Fin
- 7· Fin Ray
- 8· Vertebral Column
- 9· Gonad (Ovaries or Testes)
- 10· Swim Bladder
- 11· muscle segments

- 12· Urinary Bladder
- 13· Urogenital Opening
- 14· Anus
- 15· Intestine
- 16· Pyloric Ceca
- 17· Spleen
- 18· Liver
- 19· Heart
- 20· Gill
- 21· Stomach
- 22· Kidney