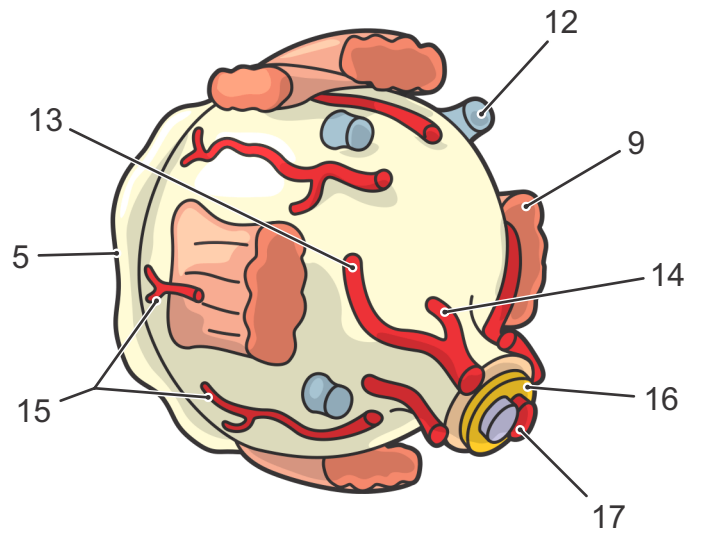
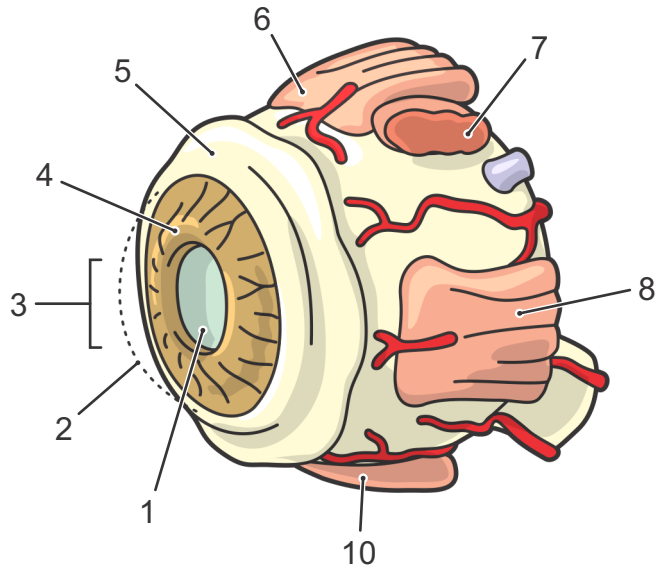
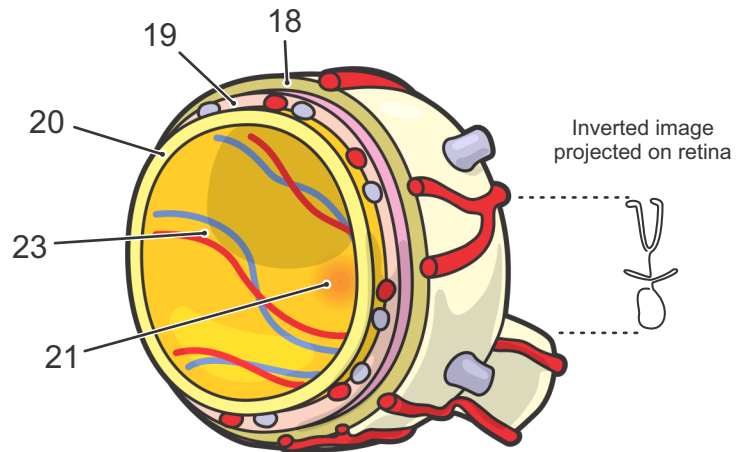
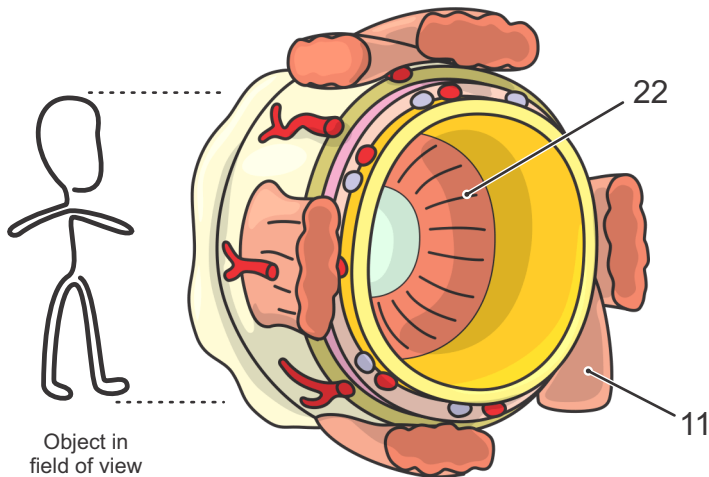


## Human Eye<sup>1</sup> - External



## Human Eye<sup>1</sup> - Internal



- 1·Lens
- 2·Cornea
- 3·Pupil
- 4·Iris
- 5·Conjunctiva
- 6·Superior Rectus Muscle
- 7·Superior Oblique Muscle
- 8·Medial Rectus Muscle
- 9·Lateral Rectus Muscle
- 10·Inferior Rectus Muscle
- 11·Inferior Oblique Muscle
- 12·Vorticose Veins (4 or 5)
- 13·Long Posterior Ciliary Arteries (2)
- 14·Short Posterior Ciliary Arteries (6-12)

- 15·Anterior Ciliary Arteries
- 16·Optic Nerve
- 17·Central Retinal Blood Vessels
- 18·Fibrous (Corneoscleral) Tunic.
- 19·Vascular (Uveal) Tunic
- 20·Retinal Tunic
- 21·Fovea
- 22·Ora Serata (overlies Ciliary Body)
- 23·Retinal Blood Vessels

### Notes:

- 1· The eye portrayed is a Right eye (for correct identification of muscles)