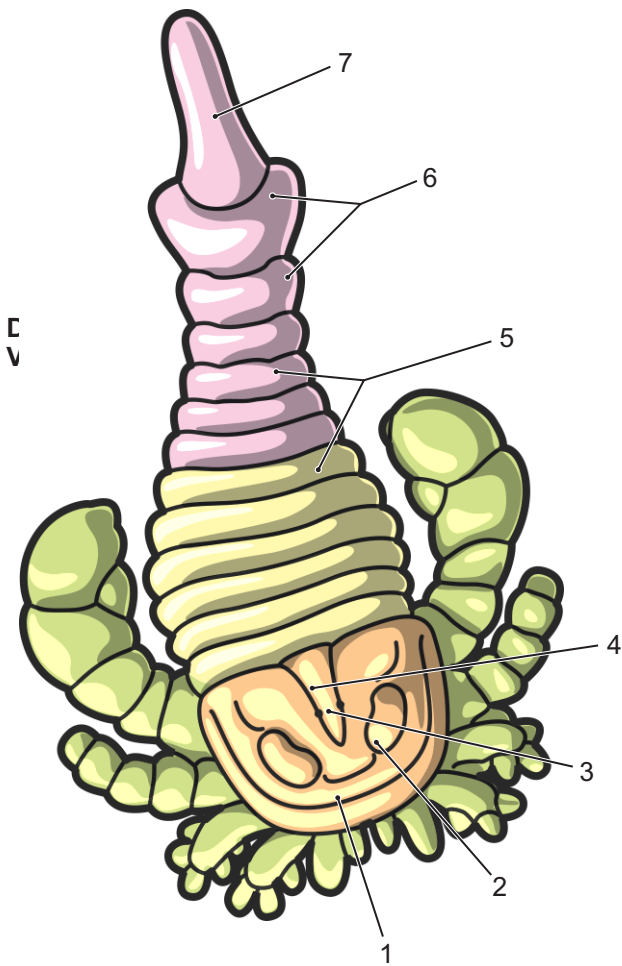


Features of the Eurypterid (Sea Scorpion) Order †Eurypterida



- 1· Carapace (head shield)
- 2· Compound Eye
- 3· Median Ocelli (simple eyes)
- 4· Glabella
- 5· Tergites (upper plate of abdominal segment)
- 6· Epimera (flattened margins of postabdominal segments)
- 7· Telson
- 8· Coxa (first segment of appendages)
- 9· Metastoma
- 10· Genital Appendage
- 11· Blatfüsse (lower plates of mesosoma)
- 12· Sternite (lower plate of opisthosoma)
- 13· Pretelson

Prosoma
 Mesosoma¹
 Metasoma²

} Opithosoma (abdomen)

- I· First Appendage (chelicera)
- II· Second Appendage (walking leg 1)
- III· Third Appendage (walking leg 2)
- IV· Fourth Appendage (walking leg 3)
- V· Fifth Appendage (balancing leg)
- VI· Sixth Appendage (swimming leg)

Notes:

- 1· Segments 1-6 (alt. Preabdomen - segments 1-7)
- 2· Segments 7-12 (alt. Postabdomen - segments 8-12)

