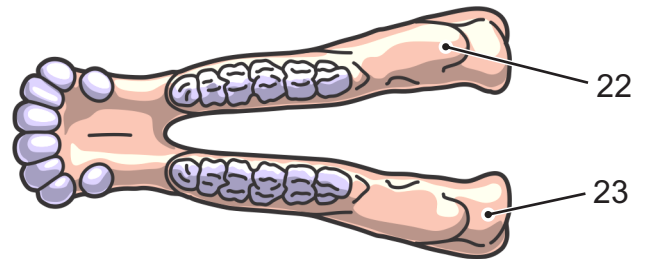
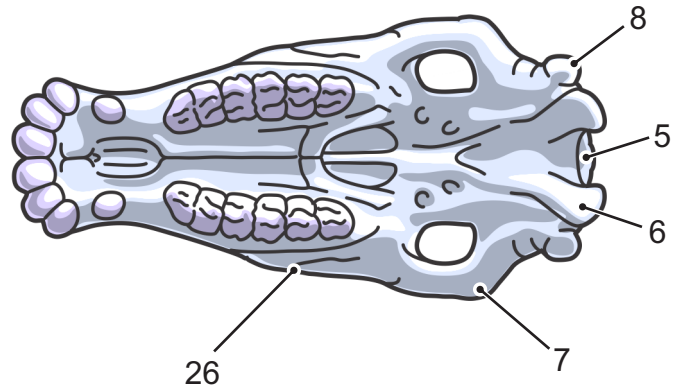
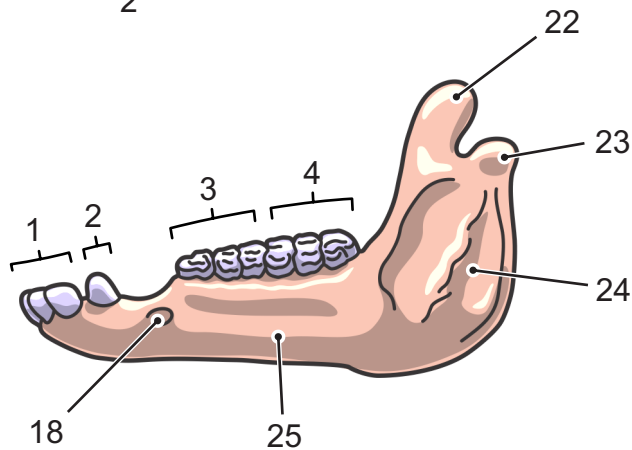
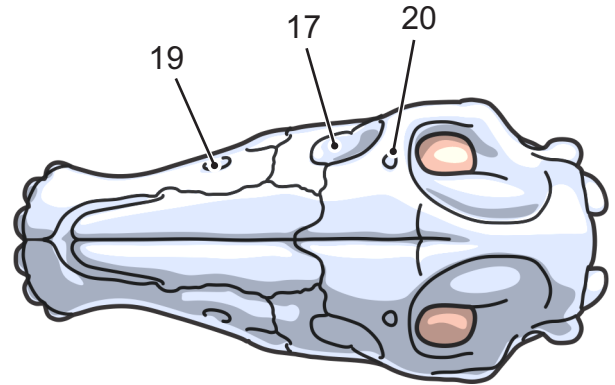
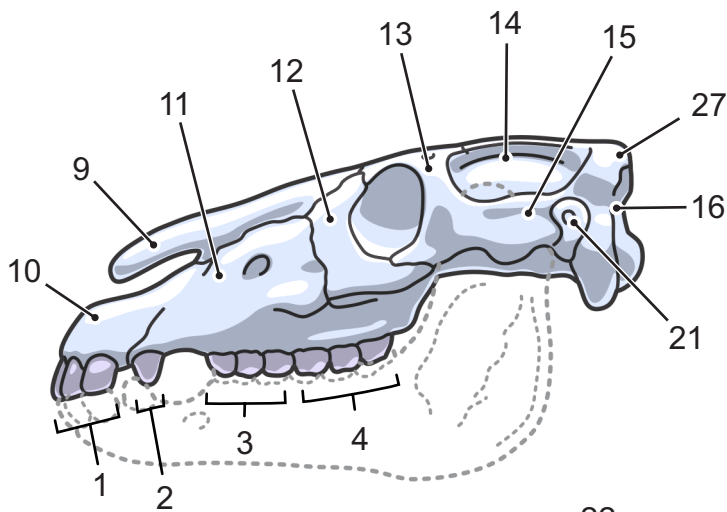


# Equine Skull



- |                                   |                    |                                    |
|-----------------------------------|--------------------|------------------------------------|
| 1· Incisors                       | 10· Incisor Bone   | 19· Infraorbital Foramen           |
| 2· Canines                        | 11· Maxillary Bone | 20· Supraorbital Foramen           |
| 3· Premolars                      | (Maxilla)          | 21· External Auditory Canal        |
| 4· Molars                         | 12· Lachrymal Bone | 22· Coronoid Process of Mandible   |
| 5· Foramen Magnum                 | 13· Frontal Bone   | 23· Condylloid Process of Mandible |
| 6· Occipital Condyle              | 14· Pariatal Bone  | 24· Ramus of Mandible              |
| 7· Zygomatic Arch                 | 15· Temporal Bone  | 25· Body of Mandible               |
| 8· Jugular (Paracondylar) Process | 16· Occipital Bone | 26· Facial Crest                   |
| 9· Nasal Bone                     | 17· Orbit          | 27· Nuchal Crest                   |
|                                   | 18· Mental Foramen |                                    |