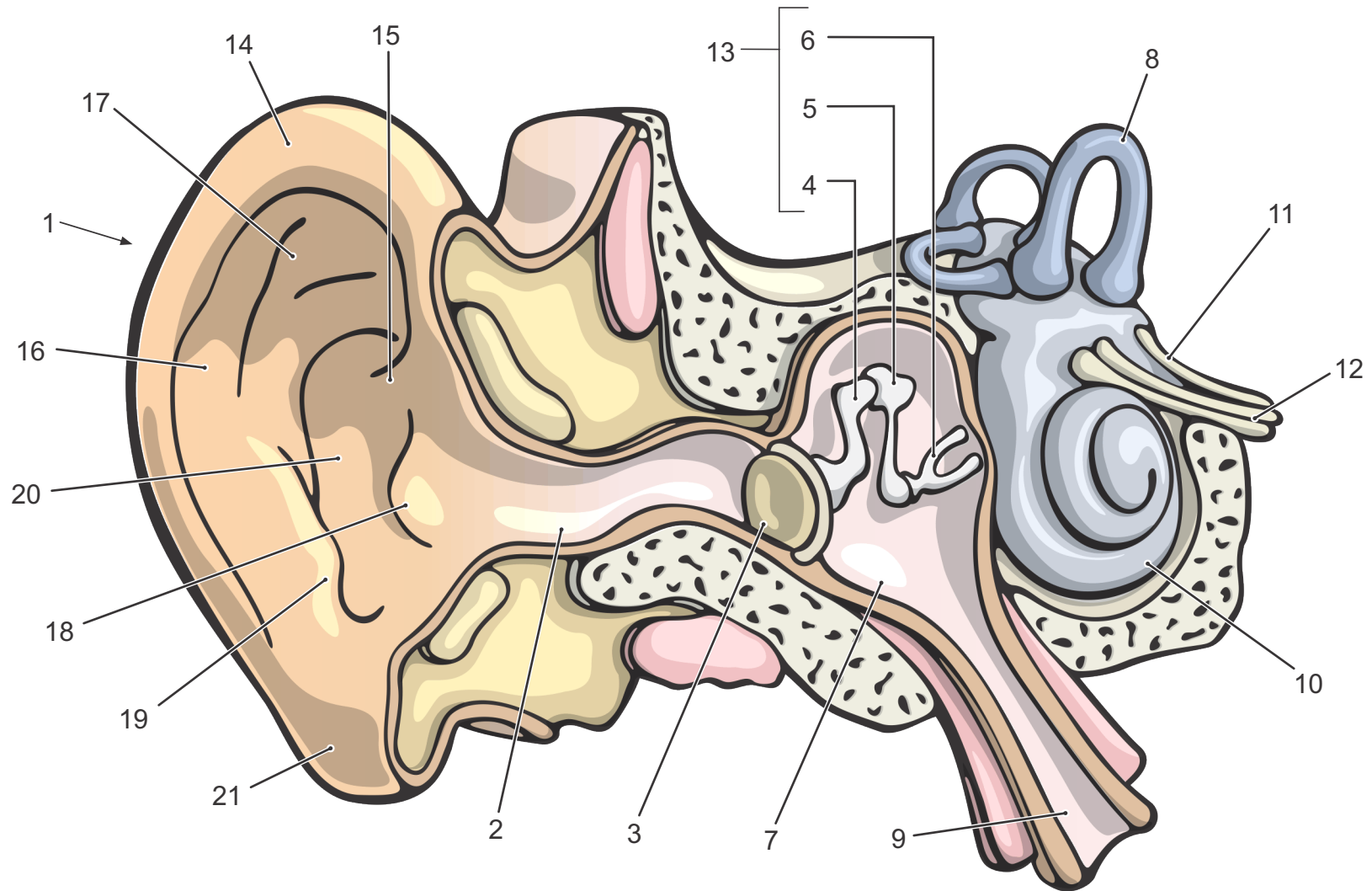


Anatomy of the Human Ear



- 1·Pinna (external ear)
- 2·External auditory meatus (canal)
- 3·Tympanic membrane (eardrum)
- 4·Malleus
- 5·Incus
- 6·Stapes
- 7·Middle ear cavity

- 8·Semicircular canals
- 9·Eustachian tube
- 10·Cochlea
- 11·Vestibular nerve
- 12·Auditory nerve
- 13·Auditory ossicles
- 14·Helix

- 15·Crus of Helix
- 16·Antihelix
- 17·Scaphoid Fossa
- 18·Tragus
- 19·Antitragus
- 20·Concha
- 21·Lobule