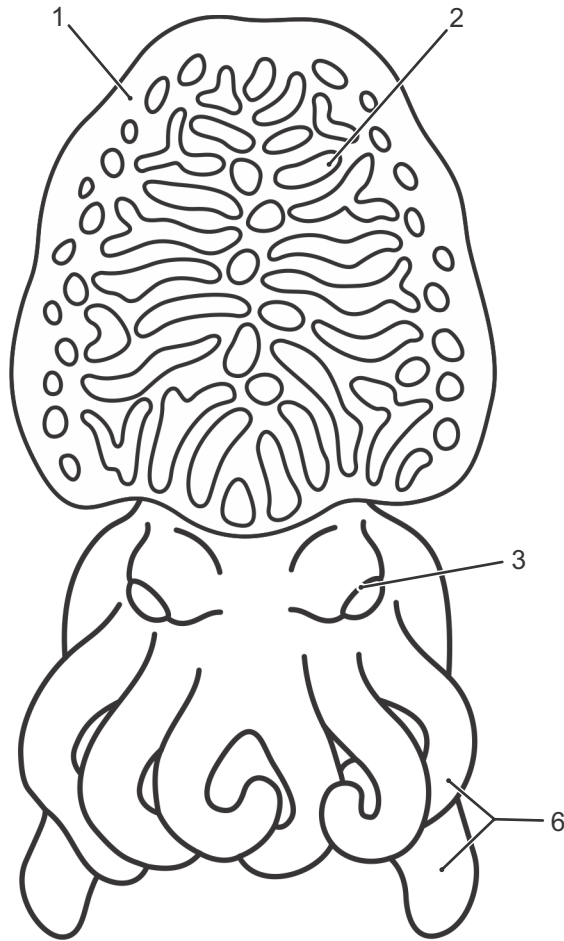
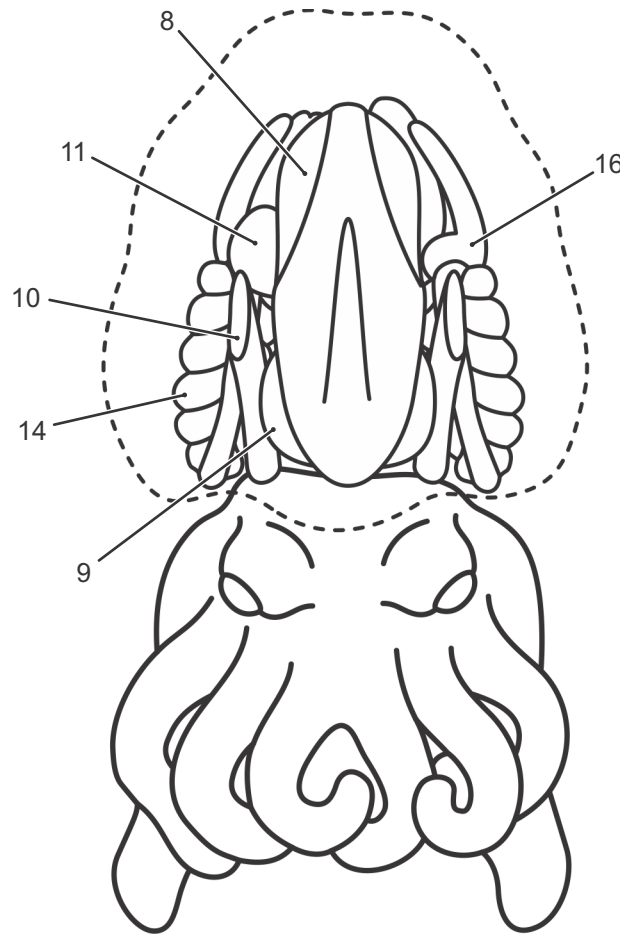


Anatomy of the Cuttlefish



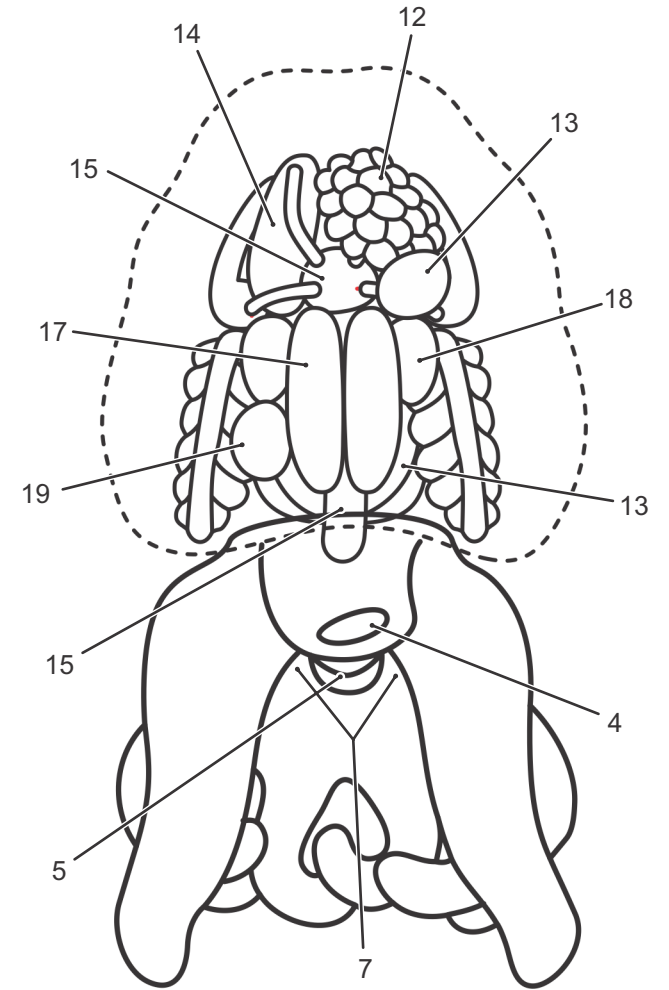
DORSAL VIEW

- 1·fin
- 2·Mantle
- 3·Eyes
- 4·Siphon
- 5·Beak
- 6·Arms



**DORSAL VIEW
(MANTLE HIDDEN)**

- 7·Tentacles (retracted)
- 8·Cuttlebone
- 9·Digestive Gland
- 10·Siphon Retractor Muscle
- 11·Stomach
- 12·Ovary*
- 13·Oviductal Gland*
- 14·Cecum
- 15·Systemic Heart
- 16·Branchial (Gill) Heart
- 17·Nidamental Glands*
- 18·Nephridium (Kidney)



**VENTRAL VIEW
(MANTLE HIDDEN)**

- 19·Pancreas
- 20·Ink Sac
- 21·Gill
- 22·Esophagus