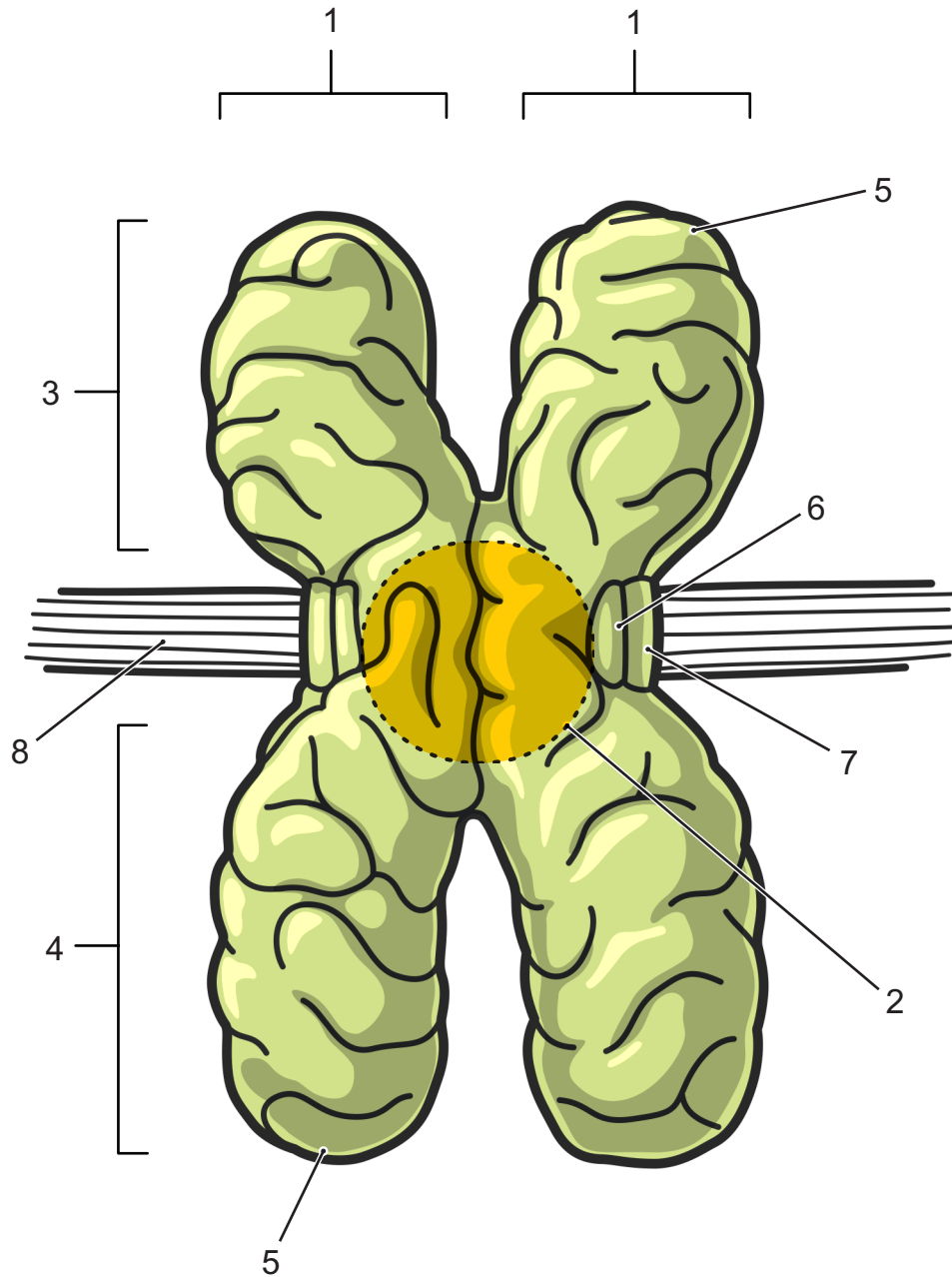
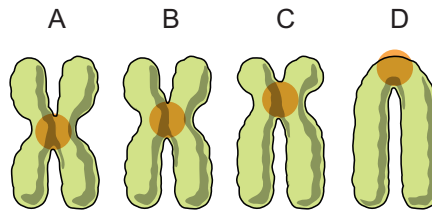


Metaphase¹ Chromosome



- 1· Sister Chromatids
- 2· Centromere
- 3· P Arm
- 4· Q Arm
- 5· Telomeres
- 6· Inner Kinetichore
- 7· Outer Kinetichore
- 8· Kinetichore Microtubules



- A· Metacentric
- B· Submetacentric
- C· Acrocentric
- D· Telocentric

1) Chromosome is in this configuration during the metaphase stage of mitosis (cell division)