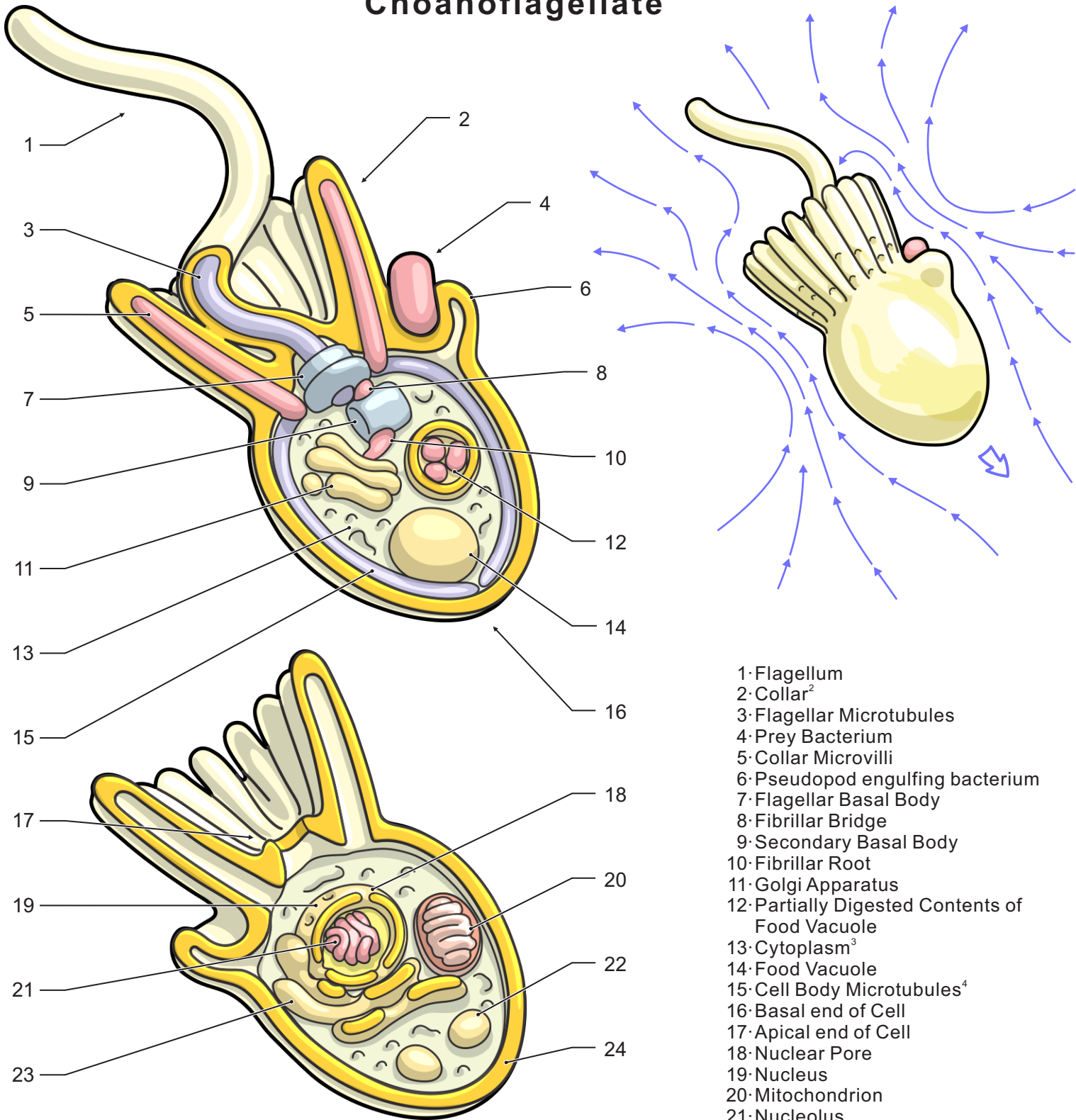


# Choanoflagellate<sup>1</sup>



- 1· Flagellum
- 2· Collar<sup>2</sup>
- 3· Flagellar Microtubules
- 4· Prey Bacterium
- 5· Collar Microvilli
- 6· Pseudopod engulfing bacterium
- 7· Flagellar Basal Body
- 8· Fibrillar Bridge
- 9· Secondary Basal Body
- 10· Fibrillar Root
- 11· Golgi Apparatus
- 12· Partially Digested Contents of Food Vacuole
- 13· Cytoplasm<sup>3</sup>
- 14· Food Vacuole
- 15· Cell Body Microtubules<sup>4</sup>
- 16· Basal end of Cell
- 17· Apical end of Cell
- 18· Nuclear Pore
- 19· Nucleus
- 20· Mitochondrion
- 21· Nucleolus
- 22· Vesicle
- 23· Endoplasmic Reticulum<sup>5</sup>
- 24· Cell (Plasma) Membrane

Notes:

- <sup>1</sup> Modeled on *Salpingoeca rosetta*
- <sup>2</sup> Linkages between adjacent microvilli visible in exterior image
- <sup>3</sup> Texture in cytoplasm indicates presence of granules
- <sup>4</sup> Arranged radially like the collar microvilli (or the seams of a football).
- <sup>5</sup> Associated with mitochondria as well as nucleus
- <sup>6</sup> Blue arrows indicate flow of fluid, which is drawn in due to the beating of the flagellum, resulting in prey entrapment on collar.

