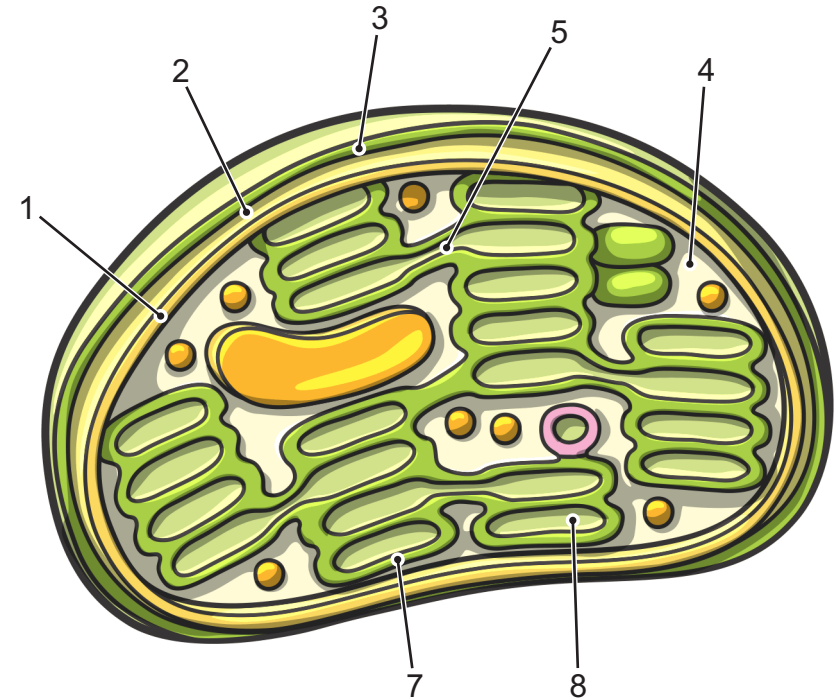
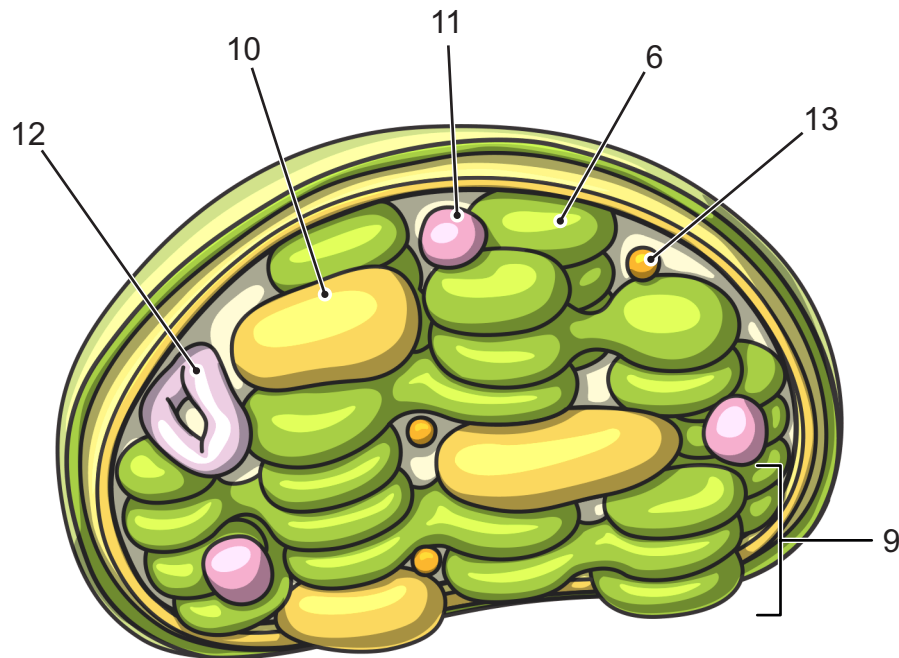


Structure of a Chloroplast



1·Outer Membrane
2·Intermembrane Space
3·Inner Membrane
4·Stroma

5·Intergranal Lamella (Stroma Lamella)
6·Thylakoid
7·Thylakoid Membrane
8·Thylakoid Lumen
9·Granum (stack of thylakoids)

10·Starch Grain (not membrane bounded)
11·Plastoglobulus / Lipid Droplet
(bounded by lipid monolayer)
12·Nucleoid / Chloroplast DNA (cpDNA)
13·Ribosomes