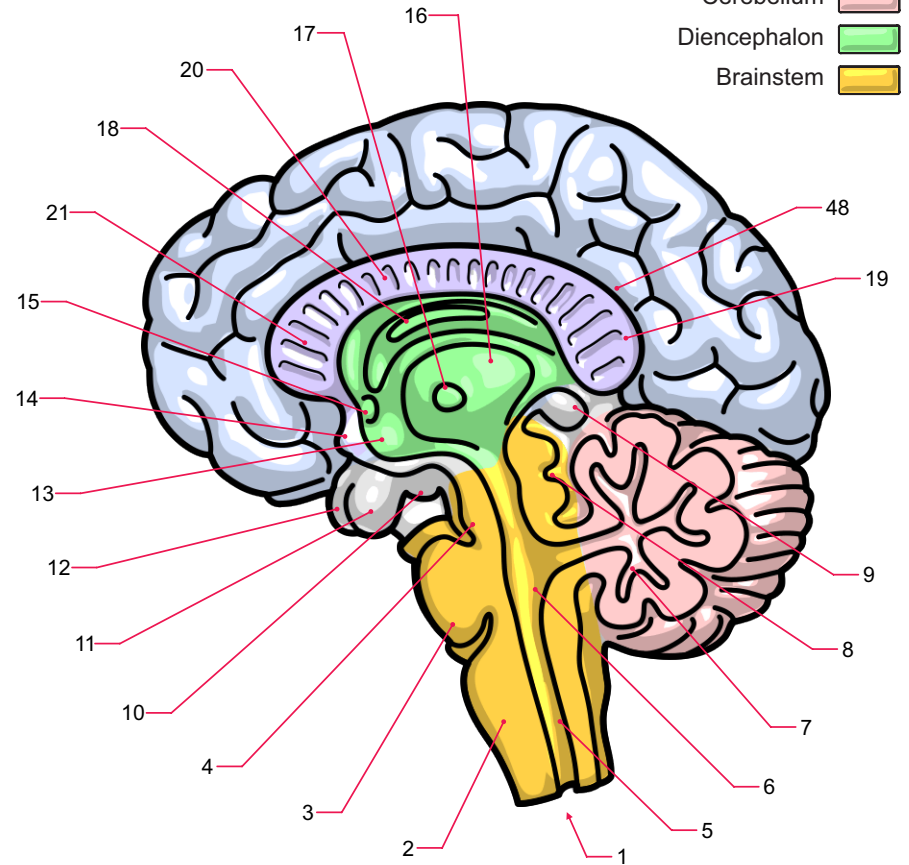
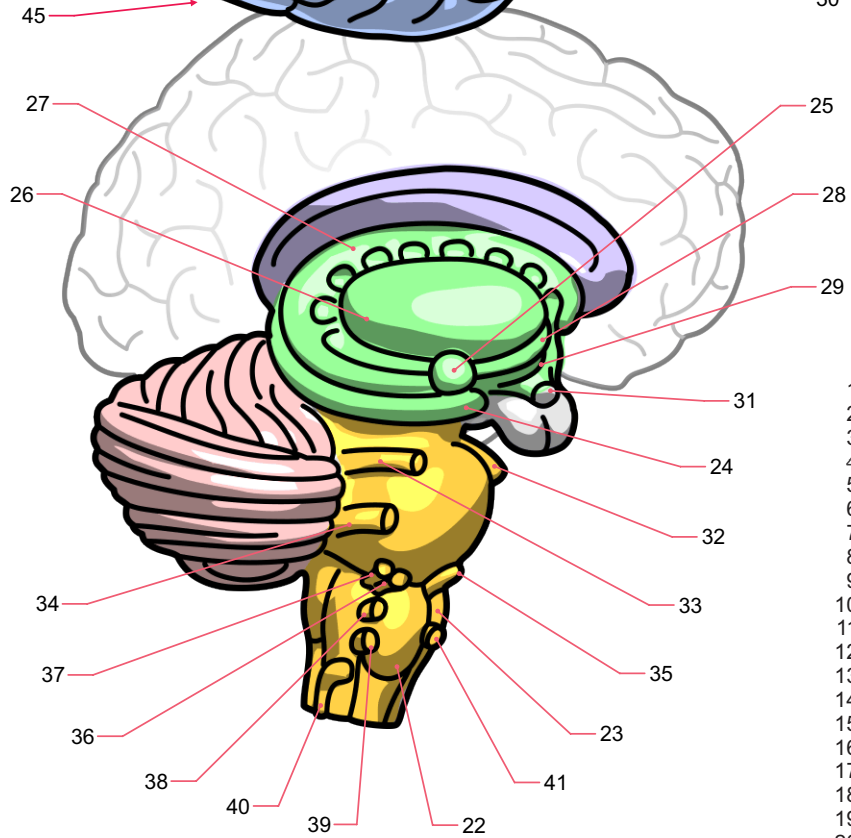
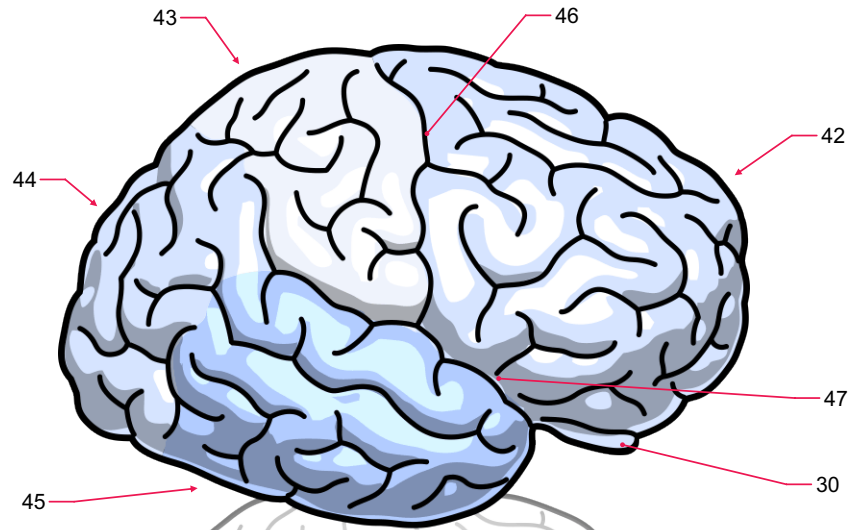


The Human Brain



- Cerebrum
- Corpus Callosum
- Cerebellum
- Diencephalon
- Brainstem

- 1 Spinal Cord
- 2 Medulla Oblongata
- 3 Pons
- 4 Mesencephalon (anterior lobe)
- 5 Central Canal
- 6 Fourth Ventricle
- 7 Arbor Vitae
- 8 Corpora Quadrigemina
- 9 Pineal Gland
- 10 Mammillary Body
- 11 Pituitary Gland (posterior lobe)
- 12 Pituitary Gland (anterior lobe)
- 13 Hypothalamus
- 14 Optic Chiasma
- 15 Anterior Commissure
- 16 Thalamus
- 17 Intermediate Mass of Thalamus
- 18 Fornix
- 19 Splenium of Corpus Callosum
- 20 Body of Corpus Callosum
- 21 Genu of Corpus Callosum

- 22 Olive
- 23 Pyramid
- 24 Hippocampus
- 25 Amygdala (Amygdaloid Body)
- 26 Putamen
- 27 Caudate Nucleus
- 28 Globus Pallidus (lateral part)
- 29 Globus Pallidus medial part)
- 30 Olfactory Nerve
- 31 Optic Nerve
- 32 Oculomotor Nerve
- 33 Trigeminal Nerve
- 34 Trigeminal Nerve
- 35 Facial Nerve

- 36 Abducent Nerve
- 37 Vestibulochochlear Nerve
- 38 Glossopharyngeal Nerve
- 39 Vagus Nerve
- 40 Accessory Nerve
- 41 Hypoglossal Nerve
- 42 Frontal Lobe
- 43 Parietal Lobe
- 44 Occipital Lobe
- 45 Temporal Lobe
- 46 Central Sulcus
- 47 Lateral (Sylvan) Sulcus
- 48 Sulcus of Corpus Callosum