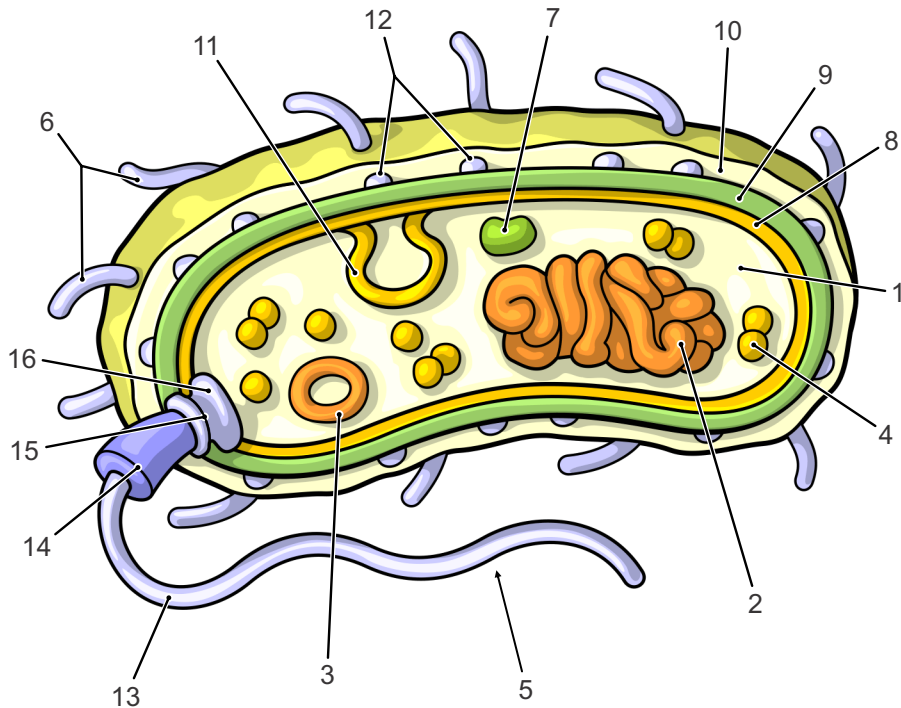
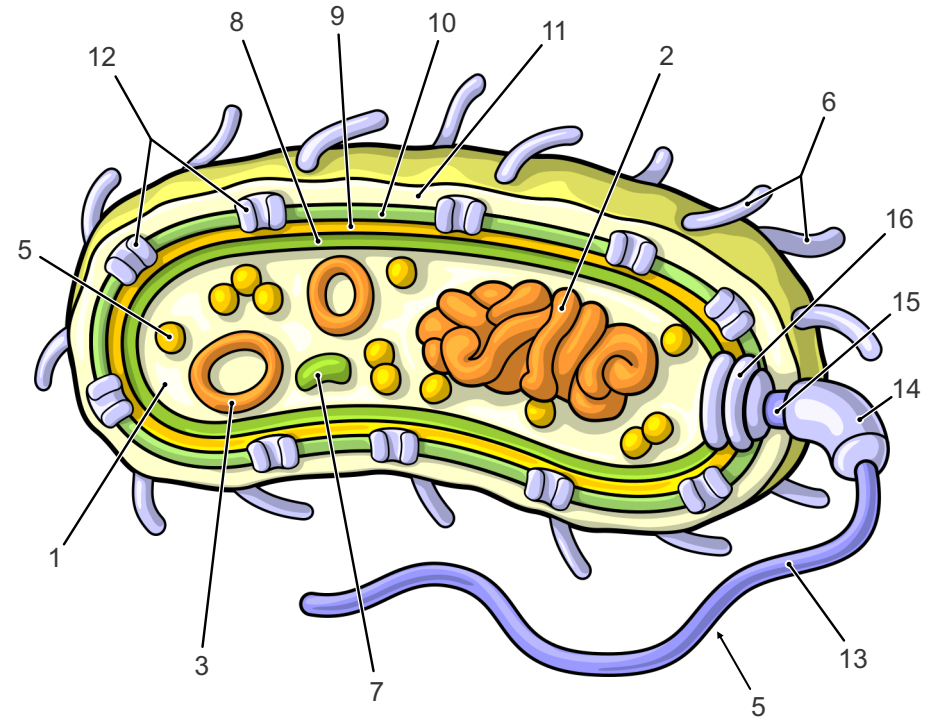


Gram Positive Bacterium



- | | |
|--|-------------------------------|
| 1·Cytoplasm | 9·Peptidoglycan Layer (thick) |
| 2·Nucleoid | 10·Capsule |
| 3·Plasmid | 11·Mesosome |
| 4·Ribosomes | 12·Surface Protein |
| 5·Flagellum | 13·Filament |
| 6·Pili/fimbriae (often absent in gram + species) | 14·Hook |
| 7·Inclusion Body | 15·Rod |
| 8·Cytoplasmic Membrane | 16·Rings (rotor proteins) |

Gram Negative Bacterium



- | | |
|------------------------|------------------------------|
| 1·Cytoplasm | 9·Peptidoglycan Layer (thin) |
| 2·Nucleoid | 10·Outer Membrane |
| 3·Plasmid | 11·Capsule |
| 4·Ribosomes | 12·Porins |
| 5·Flagellum | 13·Filament |
| 6·Pili/fimbriae | 14·Hook |
| 7·Inclusion Body | 15·Rod |
| 8·Cytoplasmic Membrane | 16·Rings (rotor proteins) |