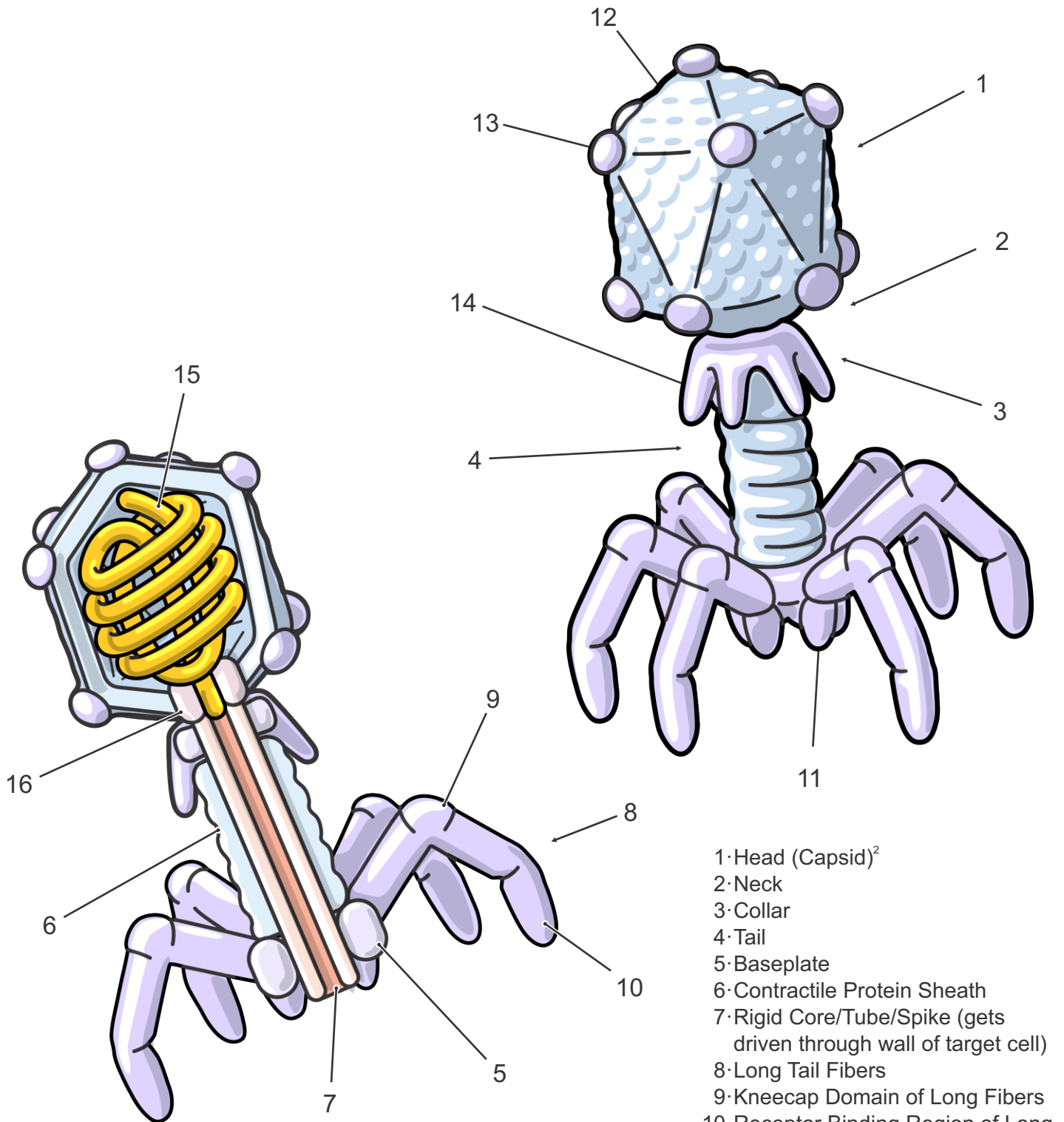


Parts of a Bacteriophage¹



- 1·Head (Capsid)²
- 2·Neck
- 3·Collar
- 4·Tail
- 5·Baseplate
- 6·Contractile Protein Sheath
- 7·Rigid Core/Tube/Spike (gets driven through wall of target cell)
- 8·Long Tail Fibers
- 9·Kneecap Domain of Long Fibers
- 10·Receptor Binding Region of Long Fibers
- 11·Short Tail Fibers (Spikes/Pins)
- 12·Capsid Proteins (Capsomeres)
- 13·Vertex Capsomeres
- 14·Whiskers
- 15·dsDNA (Double Stranded DNA)
- 16·Portal Barrel

- 1) Typical T4 enterobacteria phage of family Myoviridae depicted.
- 2) Elongated (prolate) Icosahedral symmetry.