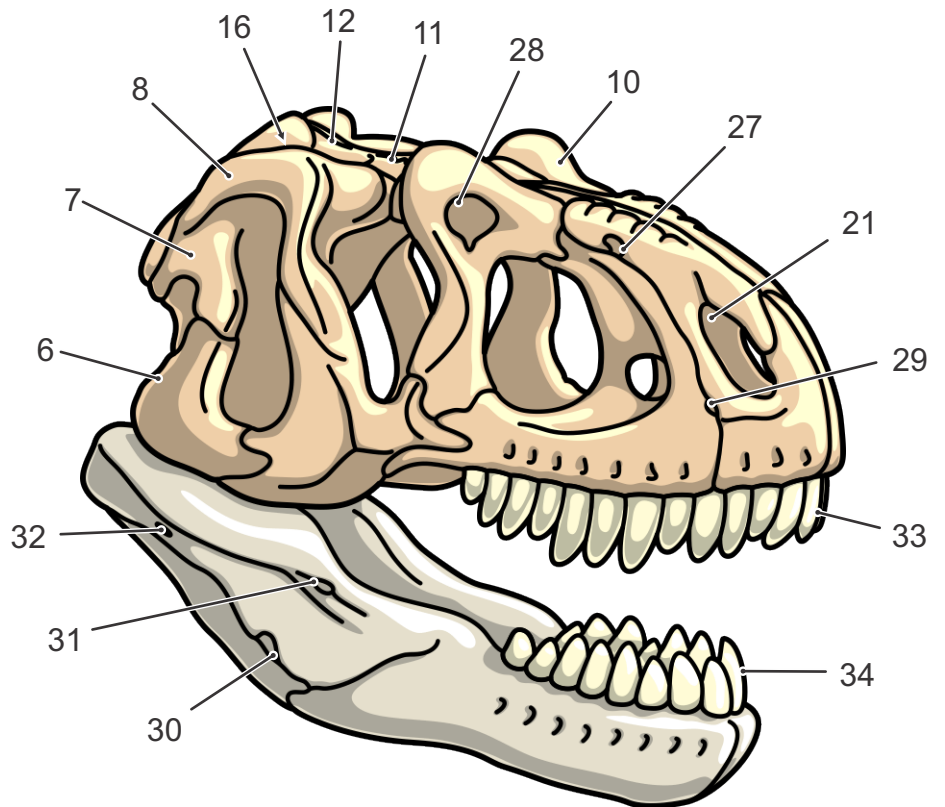


The Skull of Allosaurus

Genus: †*Allosaurus*

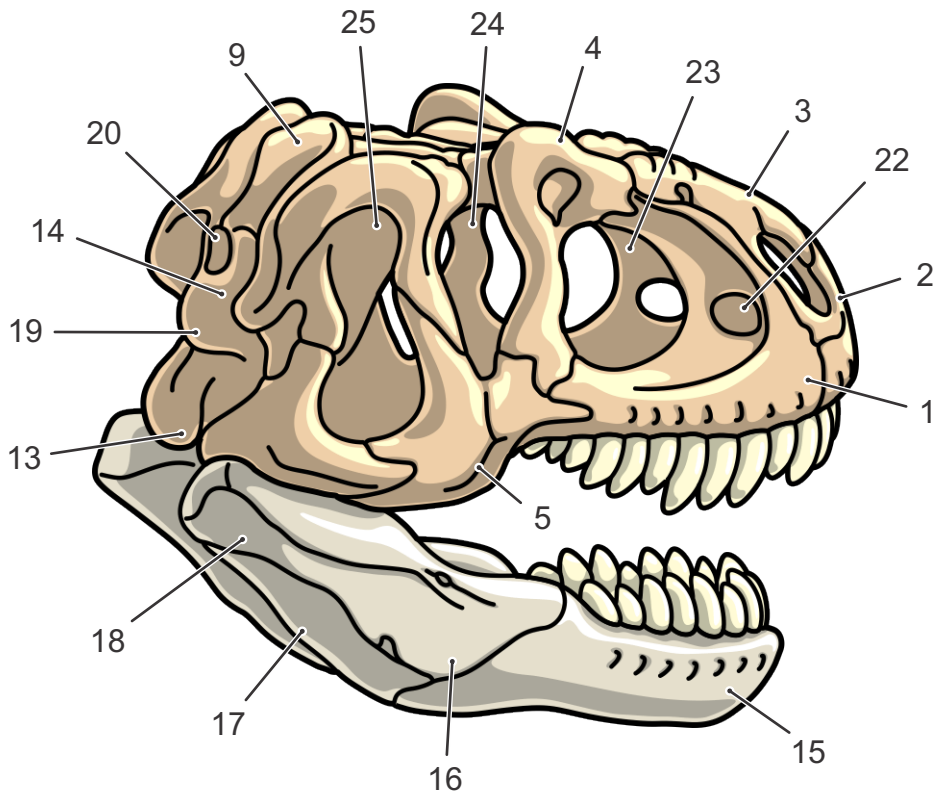
Bones

- 1·Maxilla
- 2·Premaxilla
- 3·Nasal
- 4·Lachrymal
- 5·Jugal
- 6·Quadratojugal
- 7·Squamosal
- 8·Postorbital
- 9·Parietal
- 10·Prefrontal
- 11·Frontal
- 12·Supraoccipital
- 13·Quadrate
- 14·Exoccipital
- 15·Dentary
- 16·Surrangular
- 17·Angular
- 18·Articular



Features

- 19·Occipital Condyle
- 20·Foramen Magnum
- 21·Naris
- 22·Maxillary Fenestra
- 23·Antorbital Fenestra
- 24·Orbital Fenestra
- 25·Lateral Temporal Fenestra
- 26·Superior Temporal Fenestra
- 27·Nasal Foramen
- 28·Lachrymal Vacuity
- 29·Subnarial Foramen
- 30·Ext. Mandibular Fenestra
- 31·Ant. Surrangular Foramen
- 32·Post. Surrangular Foramen
- 33·Maxillary Teeth
- 34·Dentary Teeth



Cranium
Mandible