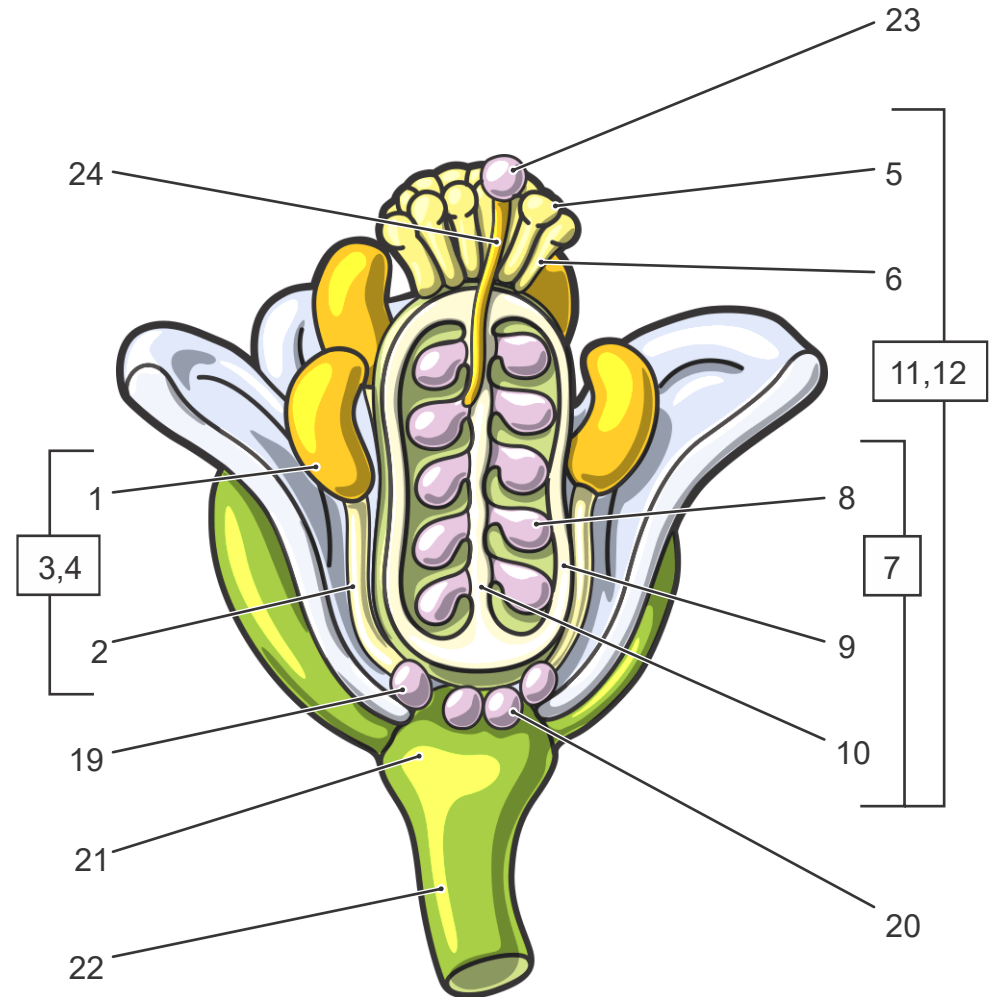
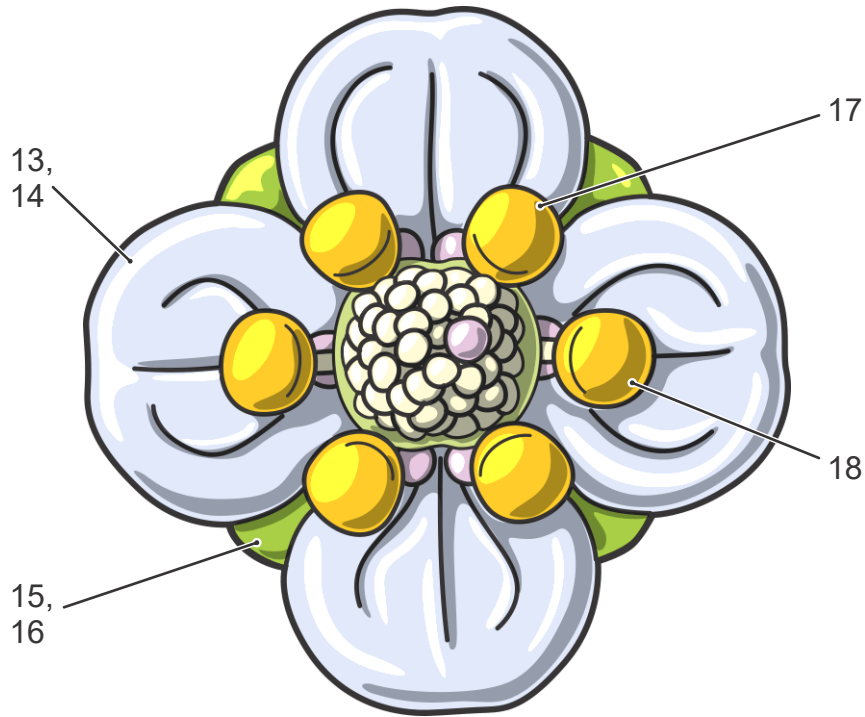


## *Arabidopsis thaliana* Flower



- 1· Anther
- 2· Filament
- 3· Stamen
- 4· Androecium (all Stamens)
- 5· Stigma
- 6· Style
- 7· Ovary
- 8· Ovule
- 9· Valve (Half of Ovary outer wall)
- 10· Septum (separates valves)

- 11· Carpel
- 12· Gynoecium (all Carpels - in this case one)
- 13· Petal
- 14· Corolla (all Petals)
- 15· Sepal
- 16· Calyx (all Sepals)
- 17· Short Stamen (two in number)

- 18· Long Stamen (four in number)
- 19· Lateral Nectary
- 20· Medial Nectary
- 21· Receptacle
- 22· Pedicel (stem)
- 23· Pollen
- 24· Pollen Tube