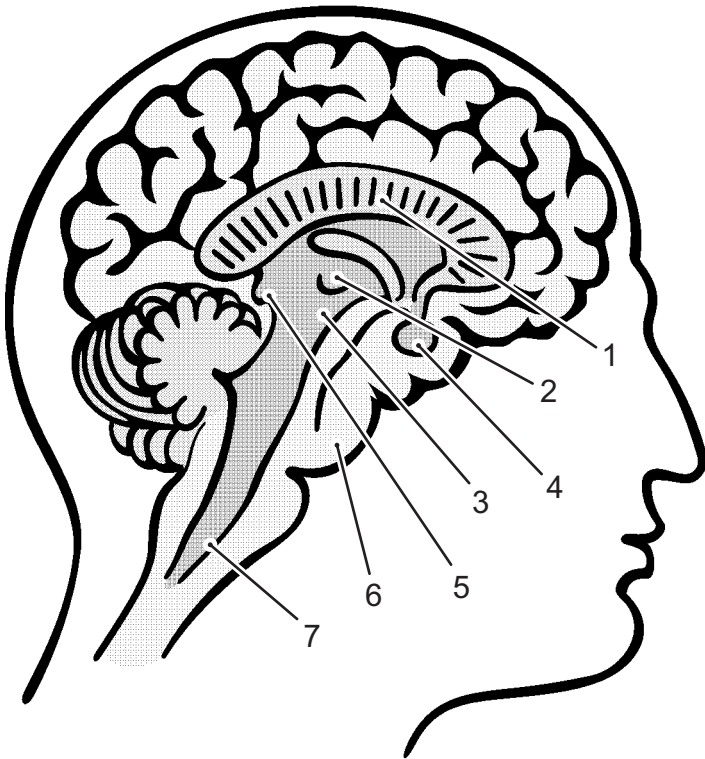


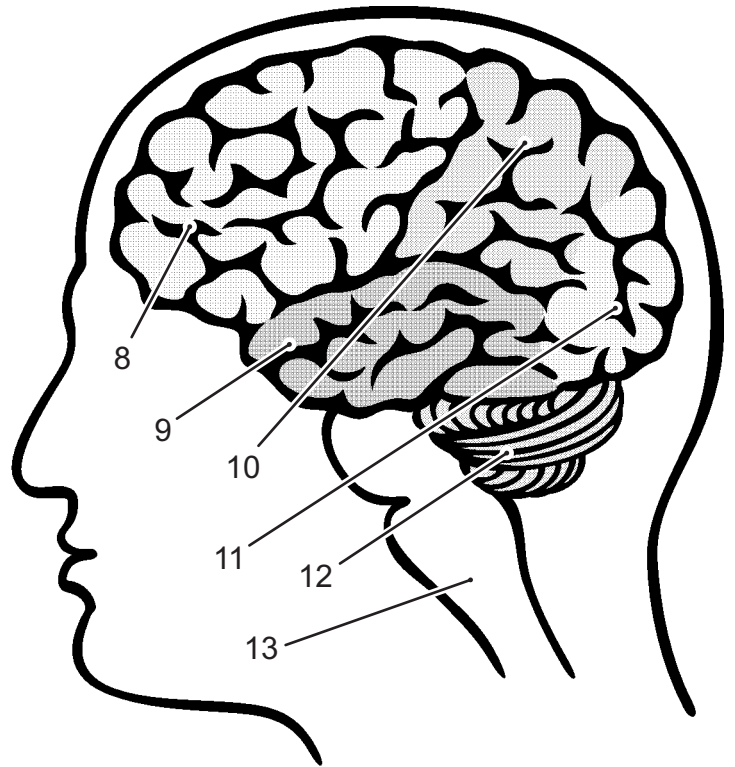
Human Brain Anatomy

- 1·Corpus Callosum
- 2·Thalamus
- 3·Hypothalamus
- 4·Pituitary Gland
- 5·Pineal Gland
- 6·Pons
- 7·Medulla Oblongata

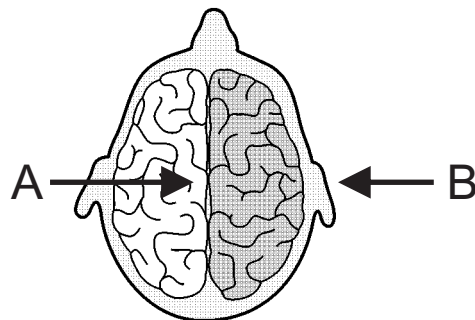
- 8·Frontal Lobe
- 9·Temporal lobe
- 10·parietal lobe
- 11·Occipital lobe
- 12·Cerebellum
- 13·Brainstem



View A (mid-plane)



View B (outside)



Top View